

HPSE2 Antibody - N-terminal region

Rabbit Polyclonal Antibody

Catalog # AI15285

Product Information

Application	WB
Primary Accession	Q8WWQ2
Other Accession	NM_001166245 , NP_001159717
Reactivity	Human, Mouse, Dog
Predicted	Human, Mouse, Dog
Host	Rabbit
Clonality	Polyclonal
Calculated MW	66596

Additional Information

Gene ID	60495
Alias Symbol	FLJ11684, FLJ44022, HPA2, HPR2, MGC133234
Other Names	Inactive heparanase-2, Hpa2, HPSE2, HPA2
Format	Liquid. Purified antibody supplied in 1x PBS buffer with 0.09% (w/v) sodium azide and 2% sucrose.
Reconstitution & Storage	Add 50 ul of distilled water. Final anti-HPSE2 antibody concentration is 1 mg/ml in PBS buffer with 2% sucrose. For longer periods of storage, store at 20°C. Avoid repeat freeze-thaw cycles.
Precautions	HPSE2 Antibody - N-terminal region is for research use only and not for use in diagnostic or therapeutic procedures.

Protein Information

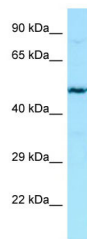
Name	HPSE2
Synonyms	HPA2
Function	Binds heparin and heparan sulfate with high affinity, but lacks heparanase activity. Inhibits HPSE, possibly by competing for its substrates (in vitro).
Cellular Location	Secreted, extracellular space, extracellular matrix
Tissue Location	Widely expressed, with the highest expression in brain, mammary gland, prostate, small intestine, testis and uterus. In the central nervous system, expressed in the spinal cord, caudate nucleus, thalamus, substantia nigra, medulla oblongata, putamen and pons. In the urinary bladder, expressed in

longitudinal and circular layers of detrusor muscle. Found both in normal and cancer tissues

References

McKenzie E.,et al.Biochem. Biophys. Res. Commun. 276:1170-1177(2000).
Legoux P.,et al.Submitted (JAN-2002) to the EMBL/GenBank/DDBJ databases.
Deloukas P.,et al.Nature 429:375-381(2004).
Pang J.,et al.Am. J. Hum. Genet. 86:957-962(2010).
Pang J.,et al.Am. J. Hum. Genet. 87:161-161(2010).

Images



WB Suggested Anti-HPSE2 Antibody Titration: 1.0 µg/ml
Positive Control: Jurkat Whole Cell

Please note: All products are 'FOR RESEARCH USE ONLY. NOT FOR USE IN DIAGNOSTIC OR THERAPEUTIC PROCEDURES'.