

HTR3E Antibody - C-terminal region

Rabbit Polyclonal Antibody

Catalog # AI15286

Product Information

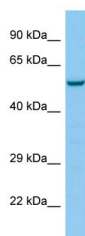
Application	WB
Primary Accession	E9PGF1
Reactivity	Human, Rabbit, Dog
Predicted	Human, Rabbit, Dog
Host	Rabbit
Clonality	Polyclonal
Calculated MW	53 kDa

Additional Information

Format	Liquid. Purified antibody supplied in 1x PBS buffer with 0.09% (w/v) sodium azide and 2% sucrose.
Reconstitution & Storage	Add 50 ul of distilled water. Final anti-HTR3E antibody concentration is 1 mg/ml in PBS buffer with 2% sucrose. For longer periods of storage, store at 20°C. Avoid repeat freeze-thaw cycles.
Precautions	HTR3E Antibody - C-terminal region is for research use only and not for use in diagnostic or therapeutic procedures.

Protein Information

Images



Host: Rabbit
Target Name: HTR3E
Sample Tissue: NCI-H226 Whole cell lysate
S
Antibody Dilution: 1.0µg/ml

Please note: All products are 'FOR RESEARCH USE ONLY. NOT FOR USE IN DIAGNOSTIC OR THERAPEUTIC PROCEDURES'.