

LGSN Antibody - N-terminal region

Rabbit Polyclonal Antibody

Catalog # AI15287

Product Information

Application	WB
Primary Accession	Q5TDP6
Other Accession	NM_016571 , NP_057655
Reactivity	Human, Rabbit, Dog, Bovine
Predicted	Human, Rabbit, Dog, Bovine
Host	Rabbit
Clonality	Polyclonal
Calculated MW	57278

Additional Information

Gene ID	51557
Alias Symbol	GLULD1, LGS, MGC163238, MGC163240
Other Names	Lensin, Glutamate-ammonia ligase domain-containing protein 1, Lens glutamine synthase-like, LGSN, GLULD1, LGS
Format	Liquid. Purified antibody supplied in 1x PBS buffer with 0.09% (w/v) sodium azide and 2% sucrose.
Reconstitution & Storage	Add 50 ul of distilled water. Final anti-LGSN antibody concentration is 1 mg/ml in PBS buffer with 2% sucrose. For longer periods of storage, store at 20°C. Avoid repeat freeze-thaw cycles.
Precautions	LGSN Antibody - N-terminal region is for research use only and not for use in diagnostic or therapeutic procedures.

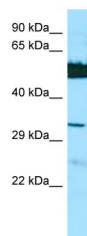
Protein Information

Name	LGSN
Synonyms	GLULD1, LGS
Function	May act as a component of the cytoskeleton or as a chaperone for the reorganization of intermediate filament proteins during terminal differentiation in the lens. Does not seem to have enzymatic activity (By similarity).
Tissue Location	Abundantly expressed in lens.

References

Grassi F.,et al.Biochem. Biophys. Res. Commun. 350:424-429(2006).
Wistow G.,et al.Mol. Vis. 8:171-184(2002).
Mungall A.J.,et al.Nature 425:805-811(2003).
Mural R.J.,et al.Submitted (JUL-2005) to the EMBL/GenBank/DDBJ databases.

Images



WB Suggested Anti-LGSN Antibody Titration: 1.0 µg/ml
Positive Control: HepG2 Whole Cell

Please note: All products are 'FOR RESEARCH USE ONLY. NOT FOR USE IN DIAGNOSTIC OR THERAPEUTIC PROCEDURES'.