

NDUFAF2 Antibody - N-terminal region

Rabbit Polyclonal Antibody

Catalog # AI15288

Product Information

Application	WB
Primary Accession	Q8N183
Other Accession	NM_174889 , NP_777549
Reactivity	Human, Mouse, Rabbit, Dog, Horse, Bovine
Predicted	Human, Mouse, Rabbit, Dog, Horse, Bovine
Host	Rabbit
Clonality	Polyclonal
Calculated MW	19856

Additional Information

Gene ID	91942
Alias Symbol Other Names	B17.2L, FLJ22398, MMTN, NDUFA12L, mimitin Mimitin, mitochondrial, B17.2-like, B17.2L, Myc-induced mitochondrial protein, MMTN, NADH dehydrogenase [ubiquinone] 1 alpha subcomplex assembly factor 2, NDUFA12-like protein, NDUFAF2, NDUFA12L
Format	Liquid. Purified antibody supplied in 1x PBS buffer with 0.09% (w/v) sodium azide and 2% sucrose.
Reconstitution & Storage	Add 50 ul of distilled water. Final anti-NDUFAF2 antibody concentration is 1 mg/ml in PBS buffer with 2% sucrose. For longer periods of storage, store at 20°C. Avoid repeat freeze-thaw cycles.
Precautions	NDUFAF2 Antibody - N-terminal region is for research use only and not for use in diagnostic or therapeutic procedures.

Protein Information

Name	NDUFAF2
Synonyms	NDUFA12L
Function	Acts as a molecular chaperone for mitochondrial complex I assembly (PubMed: 16200211 , PubMed: 19384974). Complex I functions in the transfer of electrons from NADH to the respiratory chain. The immediate electron acceptor for the enzyme is believed to be ubiquinone (PubMed: 16200211 , PubMed: 27626371). Is involved in the initial steps of cilia formation, including removal of CP110 from the mother centrioles, docking of membrane vesicles to the mother centrioles, and establishment of the transition zone

(PubMed:[38949024](#)).

Cellular Location

Mitochondrion.

Tissue Location

Highly expressed in ESCC cells. Also expressed in heart, skeletal muscle, liver, and in fibroblasts

References

Tsuneoka M.,et al.J. Biol. Chem. 280:19977-19985(2005).

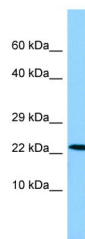
Ota T.,et al.Nat. Genet. 36:40-45(2004).

Mural R.J.,et al.Submitted (JUL-2005) to the EMBL/GenBank/DDBJ databases.

Ogilvie I.,et al.J. Clin. Invest. 115:2784-2792(2005).

Burkard T.R.,et al.BMC Syst. Biol. 5:17-17(2011).

Images



WB Suggested Anti-NDUFAF2 Antibody Titration: 1.0
µg/ml
Positive Control: MCF7 Whole Cell

Please note: All products are 'FOR RESEARCH USE ONLY. NOT FOR USE IN DIAGNOSTIC OR THERAPEUTIC PROCEDURES'.