

STAG2 Antibody - C-terminal region

Rabbit Polyclonal Antibody

Catalog # AI15291

Product Information

Application	WB
Primary Accession	Q8N3U4
Other Accession	NM_006603 , NP_006594
Reactivity	Human, Mouse, Rat, Rabbit, Zebrafish, Pig, Dog, Horse, Bovine
Predicted	Human, Mouse, Rat, Rabbit, Zebrafish, Pig, Dog, Horse, Bovine
Host	Rabbit
Clonality	Polyclonal
Calculated MW	141326

Additional Information

Gene ID	10735
Alias Symbol Other Names	DKFZp686P168, DKFZp781H1753, FLJ25871, SA-2, SA2, bA517O1.1, SCC3B Cohesin subunit SA-2, SCC3 homolog 2, Stromal antigen 2, STAG2, SA2
Format	Liquid. Purified antibody supplied in 1x PBS buffer with 0.09% (w/v) sodium azide and 2% sucrose.
Reconstitution & Storage	Add 50 ul of distilled water. Final anti-STAG2 antibody concentration is 1 mg/ml in PBS buffer with 2% sucrose. For longer periods of storage, store at 20°C. Avoid repeat freeze-thaw cycles.
Precautions	STAG2 Antibody - C-terminal region is for research use only and not for use in diagnostic or therapeutic procedures.

Protein Information

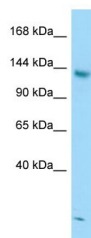
Name	STAG2
Synonyms	SA2
Function	Component of cohesin complex, a complex required for the cohesion of sister chromatids after DNA replication. The cohesin complex apparently forms a large proteinaceous ring within which sister chromatids can be trapped. At anaphase, the complex is cleaved and dissociates from chromatin, allowing sister chromatids to segregate. The cohesin complex may also play a role in spindle pole assembly during mitosis.
Cellular Location	Nucleus. Chromosome. Chromosome, centromere. Note=Associates with chromatin. Before prophase it is scattered along chromosome arms. During

prophase, most of cohesin complexes dissociate from chromatin probably because of phosphorylation by PLK1, except at centromeres, where cohesin complexes remain. At anaphase, the RAD21 subunit of cohesin is cleaved, leading to the dissociation of the complex from chromosomes, allowing chromosome separation. In germ cells, cohesin complex dissociates from chromatin at prophase I, and may be replaced by a meiosis-specific cohesin complex

References

Bechtel S.,et al.BMC Genomics 8:399-399(2007).
Ross M.T.,et al.Nature 434:325-337(2005).
Mural R.J.,et al.Submitted (SEP-2005) to the EMBL/GenBank/DDBJ databases.
Carramolino L.,et al.Gene 195:151-159(1997).
Carramolino L.,et al.Gene 206:283-286(1998).

Images



WB Suggested Anti-STAG2 Antibody Titration: 1.0 µg/ml
Positive Control: Jurkat Whole Cell
STAG2 is strongly supported by BioGPS gene expression data to be expressed in Human Jurkat cells

Please note: All products are 'FOR RESEARCH USE ONLY. NOT FOR USE IN DIAGNOSTIC OR THERAPEUTIC PROCEDURES'.