

AHSA1 Antibody - C-terminal region

Rabbit Polyclonal Antibody

Catalog # AI15294

Product Information

| | |
|--------------------------|--|
| Application | WB |
| Primary Accession | O95433 |
| Other Accession | NM_012111 , NP_036243 |
| Reactivity | Human, Mouse, Rat, Rabbit, Dog, Guinea Pig, Horse, Bovine |
| Predicted | Human, Mouse, Rat, Rabbit, Pig, Dog, Guinea Pig, Horse, Bovine |
| Host | Rabbit |
| Clonality | Polyclonal |
| Calculated MW | 38274 |

Additional Information

| | |
|-------------------------------------|--|
| Gene ID | 10598 |
| Alias Symbol | AHA1, C14orf3, p38 |
| Other Names | Activator of 90 kDa heat shock protein ATPase homolog 1, AHA1, p38, AHSA1, C14orf3 |
| Format | Liquid. Purified antibody supplied in 1x PBS buffer with 0.09% (w/v) sodium azide and 2% sucrose. |
| Reconstitution & Storage | Add 50 ul of distilled water. Final anti-AHSA1 antibody concentration is 1 mg/ml in PBS buffer with 2% sucrose. For longer periods of storage, store at 20°C. Avoid repeat freeze-thaw cycles. |
| Precautions | AHSA1 Antibody - C-terminal region is for research use only and not for use in diagnostic or therapeutic procedures. |

Protein Information

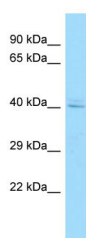
| | |
|-----------------|---|
| Name | AHSA1 |
| Synonyms | C14orf3 |
| Function | Acts as a co-chaperone of HSP90AA1 (PubMed: 29127155). Activates the ATPase activity of HSP90AA1 leading to increase in its chaperone activity (PubMed: 29127155). Competes with the inhibitory co-chaperone FNIP1 for binding to HSP90AA1, thereby providing a reciprocal regulatory mechanism for chaperoning of client proteins (PubMed: 27353360). Competes with the inhibitory co-chaperone TSC1 for binding to HSP90AA1, thereby providing a reciprocal regulatory mechanism for chaperoning of client proteins (PubMed: 29127155). |

| | |
|--------------------------|---|
| Cellular Location | Cytoplasm, cytosol. Endoplasmic reticulum. Note=May transiently interact with the endoplasmic reticulum |
| Tissue Location | Expressed in numerous tissues, including brain, heart, skeletal muscle and kidney and, at lower levels, liver and placenta. |

References

Michaud J.,et al.Submitted (JUN-1999) to the EMBL/GenBank/DDBJ databases.
 Hu R.-M.,et al.Proc. Natl. Acad. Sci. U.S.A. 97:9543-9548(2000).
 Ota T.,et al.Nat. Genet. 36:40-45(2004).
 Heilig R.,et al.Nature 421:601-607(2003).
 Mural R.J.,et al.Submitted (JUL-2005) to the EMBL/GenBank/DDBJ databases.

Images



WB Suggested Anti-AHSA1 Antibody Titration: 1.0 µg/ml
 Positive Control: MCF7 Whole Cell
 AHSA1 is supported by
 BioGPS gene expression data to be expressed in MCF7

Please note: All products are 'FOR RESEARCH USE ONLY. NOT FOR USE IN DIAGNOSTIC OR THERAPEUTIC PROCEDURES'.