

AHSA1 Antibody - C-terminal region

Rabbit Polyclonal Antibody

Catalog # AI15295

Product Information

Application	WB
Primary Accession	O95433
Other Accession	NM_012111 , NP_036243
Reactivity	Human, Rat, Rabbit, Pig, Dog, Guinea Pig, Horse, Bovine
Predicted	Human, Rat, Rabbit, Pig, Dog, Guinea Pig, Horse, Bovine
Host	Rabbit
Clonality	Polyclonal
Calculated MW	38274

Additional Information

Gene ID	10598
Alias Symbol	AHA1, C14orf3, p38
Other Names	Activator of 90 kDa heat shock protein ATPase homolog 1, AHA1, p38, AHSA1, C14orf3
Format	Liquid. Purified antibody supplied in 1x PBS buffer with 0.09% (w/v) sodium azide and 2% sucrose.
Reconstitution & Storage	Add 50 ul of distilled water. Final anti-AHSA1 antibody concentration is 1 mg/ml in PBS buffer with 2% sucrose. For longer periods of storage, store at 20°C. Avoid repeat freeze-thaw cycles.
Precautions	AHSA1 Antibody - C-terminal region is for research use only and not for use in diagnostic or therapeutic procedures.

Protein Information

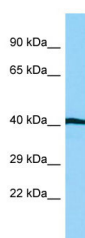
Name	AHSA1
Synonyms	C14orf3
Function	Acts as a co-chaperone of HSP90AA1 (PubMed: 29127155). Activates the ATPase activity of HSP90AA1 leading to increase in its chaperone activity (PubMed: 29127155). Competes with the inhibitory co-chaperone FNIP1 for binding to HSP90AA1, thereby providing a reciprocal regulatory mechanism for chaperoning of client proteins (PubMed: 27353360). Competes with the inhibitory co-chaperone TSC1 for binding to HSP90AA1, thereby providing a reciprocal regulatory mechanism for chaperoning of client proteins (PubMed: 29127155).

Cellular Location	Cytoplasm, cytosol. Endoplasmic reticulum. Note=May transiently interact with the endoplasmic reticulum
Tissue Location	Expressed in numerous tissues, including brain, heart, skeletal muscle and kidney and, at lower levels, liver and placenta.

References

Michaud J.,et al.Submitted (JUN-1999) to the EMBL/GenBank/DDBJ databases.
 Hu R.-M.,et al.Proc. Natl. Acad. Sci. U.S.A. 97:9543-9548(2000).
 Ota T.,et al.Nat. Genet. 36:40-45(2004).
 Heilig R.,et al.Nature 421:601-607(2003).
 Mural R.J.,et al.Submitted (JUL-2005) to the EMBL/GenBank/DDBJ databases.

Images



WB Suggested Anti-AHSA1 Antibody Titration: 1.0 µg/ml
 Positive Control: Jurkat Whole CellAHSA1 is supported by
 BioGPS gene expression data to be expressed in Jurkat

Please note: All products are 'FOR RESEARCH USE ONLY. NOT FOR USE IN DIAGNOSTIC OR THERAPEUTIC PROCEDURES'.