

STARD7 Antibody - N-terminal region

Rabbit Polyclonal Antibody

Catalog # AI15305

Product Information

Application	WB
Primary Accession	Q9NQZ5
Other Accession	NM_020151 , NP_064536
Reactivity	Human, Pig, Dog, Horse
Predicted	Human, Pig, Dog, Horse
Host	Rabbit
Clonality	Polyclonal
Calculated MW	43113

Additional Information

Gene ID	56910
Alias Symbol	GTT1
Other Names	StAR-related lipid transfer protein 7, mitochondrial, Gestational trophoblastic tumor protein 1, START domain-containing protein 7, StARD7, STARD7, GTT1
Format	Liquid. Purified antibody supplied in 1x PBS buffer with 0.09% (w/v) sodium azide and 2% sucrose.
Reconstitution & Storage	Add 50 ul of distilled water. Final anti-STARD7 antibody concentration is 1 mg/ml in PBS buffer with 2% sucrose. For longer periods of storage, store at 20°C. Avoid repeat freeze-thaw cycles.
Precautions	STARD7 Antibody - N-terminal region is for research use only and not for use in diagnostic or therapeutic procedures.

Protein Information

Name	STARD7
Synonyms	GTT1
Function	May play a protective role in mucosal tissues by preventing exaggerated allergic responses.
Cellular Location	Mitochondrion.
Tissue Location	Expressed in nasal epithelial cells. Down-regulated in nasal epithelial cells in patients experiencing an asthma exacerbation as compared to stable asthmatics and healthy controls

References

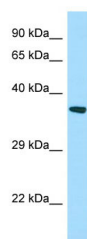
Durand S.,et al.Placenta 25:37-44(2004).

Hillier L.W.,et al.Nature 434:724-731(2005).

Mural R.J.,et al.Submitted (SEP-2005) to the EMBL/GenBank/DDBJ databases.

Burkard T.R.,et al.BMC Syst. Biol. 5:17-17(2011).

Images



WB Suggested Anti-STARD7 Antibody Titration: 1.0 µg/ml
Positive Control: HT1080 Whole Cell

Please note: All products are 'FOR RESEARCH USE ONLY. NOT FOR USE IN DIAGNOSTIC OR THERAPEUTIC PROCEDURES'.