

CEMP1 Antibody - C-terminal region

Rabbit Polyclonal Antibody

Catalog # AI15310

Product Information

Application	WB
Primary Accession	Q6PRD7
Other Accession	NM_001048212 , NP_001041677
Reactivity	Human
Predicted	Human
Host	Rabbit
Clonality	Polyclonal
Calculated MW	25959

Additional Information

Gene ID	752014
Alias Symbol	CP-23, CP23
Other Names	Cementoblastoma-derived protein 1, Cementum protein 1, Cementum protein 23, CP-23, CEMP1, CP23
Format	Liquid. Purified antibody supplied in 1x PBS buffer with 0.09% (w/v) sodium azide and 2% sucrose.
Reconstitution & Storage	Add 50 ul of distilled water. Final anti-CEMP1 antibody concentration is 1 mg/ml in PBS buffer with 2% sucrose. For longer periods of storage, store at 20°C. Avoid repeat freeze-thaw cycles.
Precautions	CEMP1 Antibody - C-terminal region is for research use only and not for use in diagnostic or therapeutic procedures.

Protein Information

Name	CEMP1 (HGNC:32553)
Function	May play a role in development of the periodontium which surrounds and supports the teeth by promoting the differentiation of multi-potent cells from the periodontal ligament into cementoblasts to form the cementum (PubMed: 17509525 , PubMed: 21465469 , PubMed: 21929512). Binds hydroxyapatite and may promote the biomineralization of the cementum (PubMed: 19393626). Also promotes cell proliferation (PubMed: 17509525 , PubMed: 21929512 , PubMed: 26011628).
Cellular Location	Cytoplasm. Nucleus Note=Localizes to the nucleus of some cementoblasts

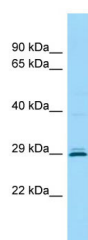
Tissue Location

Expressed by cementoblasts, a subpopulation of periodontal ligament cells and cells located around vessels in periodontium (at protein level).

References

Alvarez-Perez M.A.,et al.Bone 38:409-419(2006).

Images



WB Suggested Anti-CEMP1 Antibody Titration: 1.0 µg/ml
Positive Control: Hela Whole cell

Please note: All products are 'FOR RESEARCH USE ONLY. NOT FOR USE IN DIAGNOSTIC OR THERAPEUTIC PROCEDURES'.