

NCLN Antibody - C-terminal region

Rabbit Polyclonal Antibody

Catalog # AI15314

Product Information

Application	WB
Primary Accession	Q969V3
Other Accession	NM_020170 , NP_064555
Reactivity	Human, Mouse, Rat, Zebrafish, Pig, Dog, Guinea Pig, Bovine
Predicted	Human, Mouse, Rat, Zebrafish, Pig, Dog, Guinea Pig, Bovine
Host	Rabbit
Clonality	Polyclonal
Calculated MW	62974

Additional Information

Gene ID	56926
Alias Symbol	NET59
Other Names	Nicalin, Nicastrin-like protein, NCLN
Format	Liquid. Purified antibody supplied in 1x PBS buffer with 0.09% (w/v) sodium azide and 2% sucrose.
Reconstitution & Storage	Add 50 ul of distilled water. Final anti-NCLN antibody concentration is 1 mg/ml in PBS buffer with 2% sucrose. For longer periods of storage, store at 20°C. Avoid repeat freeze-thaw cycles.
Precautions	NCLN Antibody - C-terminal region is for research use only and not for use in diagnostic or therapeutic procedures.

Protein Information

Name	NCLN {ECO:0000303 PubMed:36261522, ECO:0000312 HGNC:HGNC:26923}
Function	Component of the multi-pass translocon (MPT) complex that mediates insertion of multi-pass membrane proteins into the lipid bilayer of membranes (PubMed:32820719, PubMed:36261522). The MPT complex takes over after the SEC61 complex: following membrane insertion of the first few transmembrane segments of proteins by the SEC61 complex, the MPT complex occludes the lateral gate of the SEC61 complex to promote insertion of subsequent transmembrane regions (PubMed:36261522). May antagonize Nodal signaling and subsequent organization of axial structures during mesodermal patterning, via its interaction with NOMO (By similarity).
Cellular Location	Endoplasmic reticulum membrane; Single-pass membrane protein

Tissue Location

Highly expressed in pancreas and skeletal muscle and, at lower levels, in heart.

References

Ota T.,et al.Nat. Genet. 36:40-45(2004).

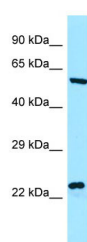
Grimwood J.,et al.Nature 428:529-535(2004).

Mural R.J.,et al.Submitted (SEP-2005) to the EMBL/GenBank/DDBJ databases.

Wiemann S.,et al.Genome Res. 11:422-435(2001).

Ebert L.,et al.Submitted (JUN-2004) to the EMBL/GenBank/DDBJ databases.

Images



WB Suggested Anti-NCLN Antibody Titration: 1.0 µg/ml
Positive Control: ACHN Whole Cell

Please note: All products are 'FOR RESEARCH USE ONLY. NOT FOR USE IN DIAGNOSTIC OR THERAPEUTIC PROCEDURES'.