

RCN3 Antibody - C-terminal region

Rabbit Polyclonal Antibody

Catalog # AI15315

Product Information

Application	WB
Primary Accession	Q96D15
Other Accession	NM_020650 , NP_065701
Reactivity	Human, Mouse, Rat, Rabbit, Zebrafish, Pig, Dog, Guinea Pig, Horse, Bovine
Predicted	Human, Mouse, Rat, Rabbit, Zebrafish, Pig, Dog, Guinea Pig, Horse, Bovine
Host	Rabbit
Clonality	Polyclonal
Calculated MW	37493

Additional Information

Gene ID	57333
Alias Symbol	RLP49
Other Names	Reticulocalbin-3, EF-hand calcium-binding protein RLP49, RCN3
Format	Liquid. Purified antibody supplied in 1x PBS buffer with 0.09% (w/v) sodium azide and 2% sucrose.
Reconstitution & Storage	Add 50 ul of distilled water. Final anti-RCN3 antibody concentration is 1 mg/ml in PBS buffer with 2% sucrose. For longer periods of storage, store at 20°C. Avoid repeat freeze-thaw cycles.
Precautions	RCN3 Antibody - C-terminal region is for research use only and not for use in diagnostic or therapeutic procedures.

Protein Information

Name	RCN3 (HGNC:21145)
Function	Probable molecular chaperone assisting protein biosynthesis and transport in the endoplasmic reticulum (PubMed: 16433634 , PubMed: 28939891). Required for the proper biosynthesis and transport of pulmonary surfactant-associated protein A/SP-A, pulmonary surfactant-associated protein D/SP-D and the lipid transporter ABCA3 (By similarity). By regulating both the proper expression and the degradation through the endoplasmic reticulum-associated protein degradation pathway of these proteins plays a crucial role in pulmonary surfactant homeostasis (By similarity). Has an anti-fibrotic activity by negatively regulating the secretion of type I and type III collagens (PubMed: 28939891). This calcium-binding protein also transiently associates with immature PCSK6 and regulates its secretion

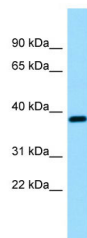
(PubMed:[16433634](#)).

Cellular Location	Endoplasmic reticulum lumen
Tissue Location	Widely expressed..

References

Liu F.,et al.Submitted (DEC-2002) to the EMBL/GenBank/DDBJ databases.
Hu R.-M.,et al.Proc. Natl. Acad. Sci. U.S.A. 97:9543-9548(2000).
Clark H.F.,et al.Genome Res. 13:2265-2270(2003).
Chen R.,et al.J. Proteome Res. 8:651-661(2009).
Burkard T.R.,et al.BMC Syst. Biol. 5:17-17(2011).

Images



WB Suggested Anti-RCN3 Antibody Titration: 1.0 µg/ml
Positive Control: Fetal Brain

Please note: All products are 'FOR RESEARCH USE ONLY. NOT FOR USE IN DIAGNOSTIC OR THERAPEUTIC PROCEDURES'.