

# S1PR3 Antibody - C-terminal region

Rabbit Polyclonal Antibody

Catalog # AI15318

## Product Information

---

<b>Application</b>	WB
<b>Primary Accession</b>	<a href="#">Q99500</a>
<b>Other Accession</b>	<a href="#">NM_005226</a> , <a href="#">NP_005217</a>
<b>Reactivity</b>	Human, Mouse, Rat, Rabbit, Zebrafish, Guinea Pig
<b>Predicted</b>	Human, Mouse, Rat, Rabbit, Zebrafish, Pig, Guinea Pig
<b>Host</b>	Rabbit
<b>Clonality</b>	Polyclonal
<b>Calculated MW</b>	42250

## Additional Information

---

<b>Gene ID</b>	1903
<b>Alias Symbol</b> <b>Other Names</b>	EDG-3, EDG3, FLJ37523, FLJ93220, LPB3, MGC71696, S1P3 Sphingosine 1-phosphate receptor 3, S1P receptor 3, S1P3, Endothelial differentiation G-protein coupled receptor 3, Sphingosine 1-phosphate receptor Edg-3, S1P receptor Edg-3, S1PR3, EDG3
<b>Format</b>	Liquid. Purified antibody supplied in 1x PBS buffer with 0.09% (w/v) sodium azide and 2% sucrose.
<b>Reconstitution &amp; Storage</b>	Add 50 ul of distilled water. Final anti-S1PR3 antibody concentration is 1 mg/ml in PBS buffer with 2% sucrose. For longer periods of storage, store at 20°C. Avoid repeat freeze-thaw cycles.
<b>Precautions</b>	S1PR3 Antibody - C-terminal region is for research use only and not for use in diagnostic or therapeutic procedures.

## Protein Information

---

<b>Name</b>	S1PR3 ( <a href="#">HGNC:3167</a> )
<b>Function</b>	Receptor for the lysosphingolipid sphingosine 1-phosphate (S1P). S1P is a bioactive lysophospholipid that elicits diverse physiological effect on most types of cells and tissues. When expressed in rat HTC4 hepatoma cells, is capable of mediating S1P-induced cell proliferation and suppression of apoptosis.
<b>Cellular Location</b>	Cell membrane; Multi-pass membrane protein.
<b>Tissue Location</b>	Expressed in all tissues, but most abundantly in heart, placenta, kidney, and

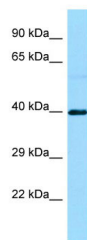
## References

---

Yamaguchi F.,et al.Biochem. Biophys. Res. Commun. 227:608-614(1996).  
An S.,et al.FEBS Lett. 417:279-282(1997).  
Kopatz S.A.,et al.Submitted (JUN-2003) to the EMBL/GenBank/DDBJ databases.  
Ota T.,et al.Nat. Genet. 36:40-45(2004).  
Humphray S.J.,et al.Nature 429:369-374(2004).

## Images

---



WB Suggested Anti-S1PR3 Antibody Titration: 1.0 µg/ml  
Positive Control: Hela Whole Cell

Please note: All products are 'FOR RESEARCH USE ONLY. NOT FOR USE IN DIAGNOSTIC OR THERAPEUTIC PROCEDURES'.