

# Nme7 Antibody - N-terminal region

Rabbit Polyclonal Antibody

Catalog # AI15340

## Product Information

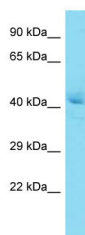
Application	WB
Primary Accession	<a href="#">Q3UMG6</a>
Other Accession	<a href="#">NM_138314</a> , <a href="#">NP_612187</a>
Reactivity	Human, Mouse, Rat, Rabbit, Dog, Guinea Pig, Horse, Bovine
Predicted	Human, Mouse, Rat, Rabbit, Pig, Dog, Guinea Pig, Horse, Bovine
Host	Rabbit
Clonality	Polyclonal
Calculated MW	44 kDa

## Additional Information

Alias Symbol	D530024H21Rik, Nm23-M7, Nm23-r7
Format	Liquid. Purified antibody supplied in 1x PBS buffer with 0.09% (w/v) sodium azide and 2% sucrose.
Reconstitution & Storage	Add 50 ul of distilled water. Final anti-Nme7 antibody concentration is 1 mg/ml in PBS buffer with 2% sucrose. For longer periods of storage, store at 20°C. Avoid repeat freeze-thaw cycles.
Precautions	Nme7 Antibody - N-terminal region is for research use only and not for use in diagnostic or therapeutic procedures.

## Protein Information

## Images



Host: Rabbit  
Target Name: Nme7  
Sample Tissue: Mouse Liver lysates  
Antibody Dilution: 1.0µg/ml