

PLSCR2 Antibody - C-terminal region

Rabbit Polyclonal Antibody

Catalog # AI15343

Product Information

| | |
|--------------------------|---|
| Application | WB |
| Primary Accession | Q9NRY7 |
| Other Accession | NM_020359 , NP_065092 |
| Reactivity | Human, Rat, Rabbit, Pig |
| Predicted | Human, Rat, Rabbit, Pig |
| Host | Rabbit |
| Clonality | Polyclonal |
| Calculated MW | 33504 |

Additional Information

| | |
|-------------------------------------|---|
| Gene ID | 57047 |
| Other Names | Phospholipid scramblase 2, PL scramblase 2, Ca(2+)-dependent phospholipid scramblase 2, PLSCR2 |
| Format | Liquid. Purified antibody supplied in 1x PBS buffer with 0.09% (w/v) sodium azide and 2% sucrose. |
| Reconstitution & Storage | Add 50 ul of distilled water. Final anti-PLSCR2 antibody concentration is 1 mg/ml in PBS buffer with 2% sucrose. For longer periods of storage, store at 20°C. Avoid repeat freeze-thaw cycles. |
| Precautions | PLSCR2 Antibody - C-terminal region is for research use only and not for use in diagnostic or therapeutic procedures. |

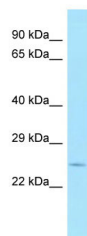
Protein Information

| | |
|--------------------------|---|
| Name | PLSCR2 (HGNC:16494) |
| Function | May catalyze calcium-induced ATP-independent rapid bidirectional and non-specific movement of phospholipids (lipid scrambling or lipid flip-flop) between the inner and outer leaflet of the plasma membrane. |
| Cellular Location | Membrane {ECO:0000250 UniProtKB:O15162}; Single-pass type II membrane protein {ECO:0000250 UniProtKB:O15162} |
| Tissue Location | Expression of isoform 1 seems restricted to testis. |

References

Wiedmer T.,et al.Biochim. Biophys. Acta 1467:244-253(2000).
Ota T.,et al.Nat. Genet. 36:40-45(2004).
Muzny D.M.,et al.Nature 440:1194-1198(2006).
Rayala S.,et al.J. Biol. Chem. 289:13206-13218(2014).

Images



WB Suggested Anti-PLSCR2 Antibody Titration: 1.0 µg/ml
Positive Control: Fetal Heart

Please note: All products are 'FOR RESEARCH USE ONLY. NOT FOR USE IN DIAGNOSTIC OR THERAPEUTIC PROCEDURES'.