

RTN4RL2 Antibody - C-terminal region

Rabbit Polyclonal Antibody

Catalog # AI15349

Product Information

Application	WB
Primary Accession	Q86UN3
Other Accession	NM_178570 , NP_848665
Reactivity	Human, Mouse, Rat, Dog, Horse, Bovine
Predicted	Human, Mouse, Rat, Dog, Horse, Bovine
Host	Rabbit
Clonality	Polyclonal
Calculated MW	46106

Additional Information

Gene ID	349667
Alias Symbol	NGRH1, NgR2
Other Names	Reticulon-4 receptor-like 2, Nogo receptor-like 3, Nogo-66 receptor homolog 1, Nogo-66 receptor-related protein 2, NgR2, RTN4RL2 (HGNC:23053)
Format	Liquid. Purified antibody supplied in 1x PBS buffer with 0.09% (w/v) sodium azide and 2% sucrose.
Reconstitution & Storage	Add 50 ul of distilled water. Final anti-RTN4RL2 antibody concentration is 1 mg/ml in PBS buffer with 2% sucrose. For longer periods of storage, store at 20°C. Avoid repeat freeze-thaw cycles.
Precautions	RTN4RL2 Antibody - C-terminal region is for research use only and not for use in diagnostic or therapeutic procedures.

Protein Information

Name	RTN4RL2 (HGNC:23053)
Function	Cell surface receptor that plays a functionally redundant role in the inhibition of neurite outgrowth mediated by MAG (By similarity). Plays a functionally redundant role in postnatal brain development. Contributes to normal axon migration across the brain midline and normal formation of the corpus callosum. Does not seem to play a significant role in regulating axon regeneration in the adult central nervous system. Protects motoneurons against apoptosis; protection against apoptosis is probably mediated by MAG (By similarity). Like other family members, plays a role in restricting the number dendritic spines and the number of synapses that are formed during brain development (PubMed: 22325200). Signaling mediates activation of Rho

and downstream reorganization of the actin cytoskeleton (PubMed:[22325200](#)).

Cellular Location

Cell membrane; Lipid-anchor, GPI-anchor. Membrane raft. Cell projection, dendrite {ECO:0000250|UniProtKB:Q7M6Z0}. Perikaryon {ECO:0000250|UniProtKB:Q80WD1}. Cell projection, axon {ECO:0000250|UniProtKB:Q80WD1}. Note=Localized to the surface of neurons, including axons. Detected close to synapses, but is excluded from synapses. {ECO:0000250|UniProtKB:Q7M6Z0}

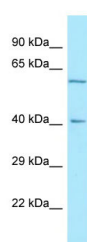
Tissue Location

Highly expressed in brain and liver. Expressed at lower levels in kidney, mammary gland, placenta, skeletal muscle, spleen and thyroid.

References

Pignot V.,et al.J. Neurochem. 85:717-728(2003).
Lauren J.,et al.Mol. Cell. Neurosci. 24:581-594(2003).
Rader C.,et al.Submitted (JUL-2006) to the EMBL/GenBank/DDBJ databases.
Taylor T.D.,et al.Nature 440:497-500(2006).
Barton W.A.,et al.EMBO J. 22:3291-3302(2003).

Images



WB Suggested Anti-RTN4RL2 Antibody Titration: 1.0 µg/ml
Positive Control: A549 Whole Cell

Please note: All products are 'FOR RESEARCH USE ONLY. NOT FOR USE IN DIAGNOSTIC OR THERAPEUTIC PROCEDURES'.