

SCUBE3 Antibody - N-terminal region

Rabbit Polyclonal Antibody

Catalog # AI15350

Product Information

Application	WB
Primary Accession	Q8IX30
Other Accession	NM_152753 , BAC03798
Reactivity	Human, Mouse, Rat, Rabbit, Zebrafish, Pig, Dog, Guinea Pig, Horse, Bovine
Predicted	Human, Mouse, Rat, Rabbit, Zebrafish, Pig, Dog, Guinea Pig, Horse, Bovine
Host	Rabbit
Clonality	Polyclonal
Calculated MW	109282

Additional Information

Gene ID	222663
Alias Symbol Other Names	CEGF3, DKFZp686B09105, DKFZp686B1223, DKFZp686D20108, FLJ34743 Signal peptide, CUB and EGF-like domain-containing protein 3, SCUBE3 (HGNC:13655)
Format	Liquid. Purified antibody supplied in 1x PBS buffer with 0.09% (w/v) sodium azide and 2% sucrose.
Reconstitution & Storage	Add 50 ul of distilled water. Final anti-SCUBE3 antibody concentration is 1 mg/ml in PBS buffer with 2% sucrose. For longer periods of storage, store at 20°C. Avoid repeat freeze-thaw cycles.
Precautions	SCUBE3 Antibody - N-terminal region is for research use only and not for use in diagnostic or therapeutic procedures.

Protein Information

Name	SCUBE3 (HGNC:13655)
Function	Is a positive regulator of the BMP signaling pathway, required for proper chondrogenesis, osteogenesis and skeletal development. It acts as a coreceptor for BMP ligands, particularly BMP2 and BMP4, facilitating their interactions with BMP type I receptors (PubMed: 33308444). It is required for ligand-induced recruitment of BMP receptors to lipid rafts (By similarity). Binds to TGFBR2 and activates TGFBR2 signaling. In lung cancer cells, could serve as an endogenous autocrine and paracrine ligand of TGFBR2, which could regulate TGFBR2 signaling and hence modulate epithelial-mesenchymal transition and cancer progression.

Cellular Location

Secreted. Cell surface

Tissue Location

Highly expressed in osteoblasts. In normal lung, mainly expressed in bronchial epithelial cells. Tends to be up-regulated in lung cancer cells.

References

Wu B.-T.,et al.J. Biol. Chem. 279:37485-37490(2004).

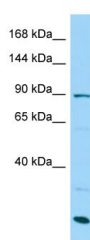
Pfarr N.,et al.Submitted (NOV-2001) to the EMBL/GenBank/DDBJ databases.

Ota T.,et al.Nat. Genet. 36:40-45(2004).

Mungall A.J.,et al.Nature 425:805-811(2003).

Mural R.J.,et al.Submitted (JUL-2005) to the EMBL/GenBank/DDBJ databases.

Images



WB Suggested Anti-SCUBE3 Antibody Titration: 1.0 µg/ml
Positive Control: MCF7 Whole Cell

Please note: All products are 'FOR RESEARCH USE ONLY. NOT FOR USE IN DIAGNOSTIC OR THERAPEUTIC PROCEDURES'.