

SMAP2 Antibody - N-terminal region

Rabbit Polyclonal Antibody

Catalog # AI15351

Product Information

Application	WB
Primary Accession	Q8WU79
Other Accession	NM_022733 , NP_073570
Reactivity	Human, Mouse, Rat, Rabbit, Pig, Dog, Guinea Pig, Horse, Bovine
Predicted	Human, Mouse, Rat, Rabbit, Pig, Dog, Guinea Pig, Horse, Bovine
Host	Rabbit
Clonality	Polyclonal
Calculated MW	46786

Additional Information

Gene ID	64744
Alias Symbol	RP1-228H13.3, SMAP1L
Other Names	Stromal membrane-associated protein 2, Stromal membrane-associated protein 1-like, SMAP2, SMAP1L
Format	Liquid. Purified antibody supplied in 1x PBS buffer with 0.09% (w/v) sodium azide and 2% sucrose.
Reconstitution & Storage	Add 50 μ l of distilled water. Final Anti-SMAP2 antibody concentration is 1 mg/ml in PBS buffer with 2% sucrose. For longer periods of storage, store at -20°C. Avoid repeat freeze-thaw cycles.
Precautions	SMAP2 Antibody - N-terminal region is for research use only and not for use in diagnostic or therapeutic procedures.

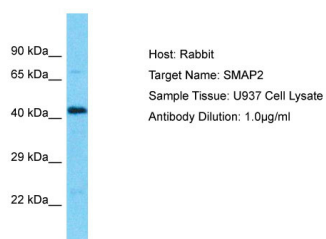
Protein Information

Name	SMAP2
Synonyms	SMAP1L
Function	GTPase activating protein that acts on ARF1. Can also activate ARF6 (in vitro). May play a role in clathrin-dependent retrograde transport from early endosomes to the trans-Golgi network (By similarity).
Cellular Location	Cytoplasm. Note=Detected in multiple foci throughout the cytoplasm and in juxtanuclear structures.

References

Rhodes S.,et al.Submitted (NOV-1999) to the EMBL/GenBank/DDBJ databases.
Ota T.,et al.Nat. Genet. 36:40-45(2004).
Gregory S.G.,et al.Nature 441:315-321(2006).
Mural R.J.,et al.Submitted (SEP-2005) to the EMBL/GenBank/DDBJ databases.
Daub H.,et al.Mol. Cell 31:438-448(2008).

Images



Host: Rabbit
Target Name: SMAP2
Sample Tissue: U937 Whole cell lysate
S
Antibody Dilution: 1.0µg/ml

Please note: All products are 'FOR RESEARCH USE ONLY. NOT FOR USE IN DIAGNOSTIC OR THERAPEUTIC PROCEDURES'.