

ALG10 Antibody - middle region

Rabbit Polyclonal Antibody

Catalog # AI15355

Product Information

Application	WB
Primary Accession	Q5BKT4
Other Accession	NM_032834 , NP_116223
Reactivity	Human, Mouse, Rat, Rabbit, Dog, Guinea Pig, Horse, Bovine
Predicted	Human, Mouse, Rat, Rabbit, Pig, Dog, Guinea Pig, Horse, Bovine
Host	Rabbit
Clonality	Polyclonal
Calculated MW	55606

Additional Information

Gene ID	84920
Alias Symbol	DIE2, FLJ14751, KCR1
Other Names	Dol-P-Glc:Glc(2)Man(9)GlcNAc(2)-PP-Dol alpha-1, 2-glucosyltransferase, 2.4.1.256, Alpha-1, 2-glucosyltransferase ALG10-A, Alpha-2-glucosyltransferase ALG10-A, Asparagine-linked glycosylation protein 10 homolog A, ALG10, ALG10A
Format	Liquid. Purified antibody supplied in 1x PBS buffer with 0.09% (w/v) sodium azide and 2% sucrose.
Reconstitution & Storage	Add 50 ul of distilled water. Final anti-ALG10 antibody concentration is 1 mg/ml in PBS buffer with 2% sucrose. For longer periods of storage, store at 20°C. Avoid repeat freeze-thaw cycles.
Precautions	ALG10 Antibody - middle region is for research use only and not for use in diagnostic or therapeutic procedures.

Protein Information

Name	ALG10 (HGNC:23162)
Function	Dol-P-Glc:Glc(2)Man(9)GlcNAc(2)-PP-Dol alpha-1,2- glucosyltransferase that operates in the biosynthetic pathway of dolichol-linked oligosaccharides, the glycan precursors employed in protein asparagine (N)-glycosylation. The assembly of dolichol-linked oligosaccharides begins on the cytosolic side of the endoplasmic reticulum membrane and finishes in its lumen. The sequential addition of sugars to dolichol pyrophosphate produces dolichol-linked oligosaccharides containing fourteen sugars, including two GlcNAcs, nine mannoses and three glucoses. Once assembled, the

oligosaccharide is transferred from the lipid to nascent proteins by oligosaccharyltransferases. In the lumen of the endoplasmic reticulum, adds the third and last glucose residue from dolichyl phosphate glucose (Dol-P-Glc) onto the lipid-linked oligosaccharide intermediate Glc(2)Man(9)GlcNAc(2)-PP-Dol to produce Glc(3)Man(9)GlcNAc(2)-PP-Dol.

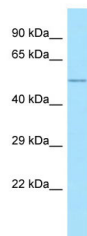
Cellular Location

Endoplasmic reticulum membrane {ECO:0000250|UniProtKB:Q5I7T1};
Multi-pass membrane protein

References

Oriol R.,et al.Mol. Biol. Evol. 19:1451-1463(2002).
Ota T.,et al.Nat. Genet. 36:40-45(2004).

Images



WB Suggested Anti-ALG10 Antibody Titration: 1.0 µg/ml
Positive Control: Placenta

Please note: All products are 'FOR RESEARCH USE ONLY. NOT FOR USE IN DIAGNOSTIC OR THERAPEUTIC PROCEDURES'.