

# CDV3 Antibody - N-terminal region

Rabbit Polyclonal Antibody

Catalog # AI15358

## Product Information

---

<b>Application</b>	WB
<b>Primary Accession</b>	<a href="#">Q9UKY7</a>
<b>Other Accession</b>	<a href="#">NP_060018</a>
<b>Reactivity</b>	Human
<b>Host</b>	Rabbit
<b>Clonality</b>	Polyclonal
<b>Calculated MW</b>	27335

## Additional Information

---

<b>Gene ID</b>	55573
<b>Alias Symbol</b> <b>Other Names</b>	CDV3, H41, Protein CDV3 homolog, CDV3, H41
<b>Format</b>	Liquid. Purified antibody supplied in 1x PBS buffer with 0.09% (w/v) sodium azide and 2% sucrose.
<b>Reconstitution &amp; Storage</b>	Add 50 $\mu$ l of distilled water. Final Anti-CDV3 antibody concentration is 1 mg/ml in PBS buffer with 2% sucrose. For longer periods of storage, store at -20°C. Avoid repeat freeze-thaw cycles.
<b>Precautions</b>	CDV3 Antibody - N-terminal region is for research use only and not for use in diagnostic or therapeutic procedures.

## Protein Information

---

<b>Name</b>	CDV3
<b>Synonyms</b>	H41
<b>Cellular Location</b>	Cytoplasm.
<b>Tissue Location</b>	Expression levels correlate with those of HER-2/neu in breast cancer cells.

## References

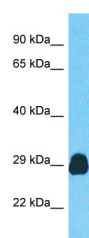
---

Oh J.J., et al. Nucleic Acids Res. 27:4008-4017(1999).  
Ota T., et al. Nat. Genet. 36:40-45(2004).

Muzny D.M.,et al.Nature 440:1194-1198(2006).  
Brill L.M.,et al.Anal. Chem. 76:2763-2772(2004).  
Dephoure N.,et al.Proc. Natl. Acad. Sci. U.S.A. 105:10762-10767(2008).

## Images

---



Host: Rabbit  
Target Name: CDV3  
Sample Tissue: Placenta Lysate  
Antibody Dilution: 1.0µg/ml

Host: Rabbit  
Target Name: CDV3  
Sample Tissue: Placenta lysates  
Antibody Dilution: 1.0µg/ml

Please note: All products are 'FOR RESEARCH USE ONLY. NOT FOR USE IN DIAGNOSTIC OR THERAPEUTIC PROCEDURES'.