

GPR31 Antibody - C-terminal region

Rabbit Polyclonal Antibody

Catalog # AI15364

Product Information

| | |
|-------------------|---------------------------|
| Application | WB |
| Primary Accession | O00270 |
| Other Accession | NP_005290 |
| Reactivity | Human |
| Host | Rabbit |
| Clonality | Polyclonal |
| Calculated MW | 35075 |

Additional Information

| | |
|-----------------------------|---|
| Gene ID | 2853 |
| Alias Symbol Other Names | GPR31, 12-(S)-hydroxy-5, 8, 10, 14-eicosatetraenoic acid receptor, 12-(S)-HETE receptor, 12-HETER, G-protein coupled receptor 31, GPR31 |
| Format | Liquid. Purified antibody supplied in 1x PBS buffer with 0.09% (w/v) sodium azide and 2% sucrose. |
| Reconstitution & Storage | Add 50 μ l of distilled water. Final Anti-GPR31 antibody concentration is 1 mg/ml in PBS buffer with 2% sucrose. For longer periods of storage, store at -20°C. Avoid repeat freeze-thaw cycles. |
| Precautions | GPR31 Antibody - C-terminal region is for research use only and not for use in diagnostic or therapeutic procedures. |

Protein Information

| | |
|----------|--|
| Name | GPR31 |
| Function | High-affinity receptor for 12-(S)-hydroxy-5,8,10,14- eicosatetraenoic acid (12-S-HETE), with much lower affinities for other HETE isomers (PubMed: 21712392 , PubMed: 29227475). 12-S-HETE is a eicosanoid, a 12-lipoxygenase (ALOX12) metabolite of arachidonic acid, involved in many physiologic and pathologic processes (PubMed: 26965684 , PubMed: 28619714 , PubMed: 29227475). 12-S-HETE-binding leads to activation of ERK1/2 (MAPK3/MAPK1), MEK, and NF-kappa-B pathways leading to cell growth (PubMed: 21712392 , PubMed: 29227475). Plays a crucial role for proliferation, survival and macropinocytosis of KRAS- dependent cancer cells by mediating the translocation of KRAS from the endoplasmic reticulum to the plasma membrane (PM) and its association with the PM (PubMed: 28619714). |

Contributes to enhanced immune responses by inducing dendrite protrusion of small intestinal CX3CR1(+) phagocytes for the uptake of luminal antigens (By similarity). Acts also as a key receptor for 12-(S)-HETE-mediated liver ischemia reperfusion injury (PubMed:[29227475](#)).

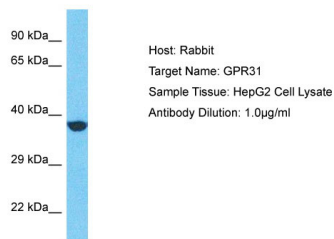
Cellular Location

Cell membrane; Multi-pass membrane protein

References

Zingoni A.,et al.Genomics 42:519-523(1997).
Kaighin V.A.,et al.Submitted (DEC-2007) to the EMBL/GenBank/DDBJ databases.
Mungall A.J.,et al.Nature 425:805-811(2003).
Mural R.J.,et al.Submitted (SEP-2005) to the EMBL/GenBank/DDBJ databases.
Guo Y.,et al.J. Biol. Chem. 286:33832-33840(2011).

Images



Host: Rabbit
Target Name: GPR31
Sample Tissue: HepG2 Whole cell lysate
S
Antibody Dilution: 1.0µg/ml

Please note: All products are 'FOR RESEARCH USE ONLY. NOT FOR USE IN DIAGNOSTIC OR THERAPEUTIC PROCEDURES'.