

# LPAR6 Antibody - C-terminal region

Rabbit Polyclonal Antibody

Catalog # AI15368

## Product Information

---

<b>Application</b>	WB
<b>Primary Accession</b>	<a href="#">P43657</a>
<b>Other Accession</b>	<a href="#">NM_005767</a> , <a href="#">NP_005758</a>
<b>Reactivity</b>	Human, Mouse, Rat, Rabbit, Zebrafish, Pig, Dog, Horse, Bovine, Sheep
<b>Predicted</b>	Human, Mouse, Rat, Rabbit, Zebrafish, Pig, Dog, Horse, Bovine, Sheep
<b>Host</b>	Rabbit
<b>Clonality</b>	Polyclonal
<b>Calculated MW</b>	39392

## Additional Information

---

<b>Gene ID</b>	10161
<b>Alias Symbol</b>	LAH3, MGC120358, P2RY5, P2Y5
<b>Other Names</b>	Lysophosphatidic acid receptor 6, LPA receptor 6, LPA-6, Oleoyl-L-alpha-lysophosphatidic acid receptor, P2Y purinoceptor 5, P2Y5, Purinergic receptor 5, RB intron encoded G-protein coupled receptor, LPAR6, P2RY5
<b>Format</b>	Liquid. Purified antibody supplied in 1x PBS buffer with 0.09% (w/v) sodium azide and 2% sucrose.
<b>Reconstitution &amp; Storage</b>	Add 50 ul of distilled water. Final anti-LPAR6 antibody concentration is 1 mg/ml in PBS buffer with 2% sucrose. For longer periods of storage, store at 20°C. Avoid repeat freeze-thaw cycles.
<b>Precautions</b>	LPAR6 Antibody - C-terminal region is for research use only and not for use in diagnostic or therapeutic procedures.

## Protein Information

---

<b>Name</b>	LPAR6
<b>Synonyms</b>	P2RY5
<b>Function</b>	Binds to oleoyl-L-alpha-lysophosphatidic acid (LPA). Intracellular cAMP is involved in the receptor activation. Important for the maintenance of hair growth and texture.
<b>Cellular Location</b>	Cell membrane; Multi-pass membrane protein

## Tissue Location

Expressed ubiquitously, including in skin and hair follicle cells. Detected in both Henle's and Huxley's layers of the inner root sheath of the hair follicle and in suprabasal layers of the epidermis (at protein level). Expressed at low levels in peripheral blood leukocytes.

## References

---

Toguchida J.,et al.Genomics 17:535-543(1993).

Herzog H.,et al.Genome Res. 6:858-861(1996).

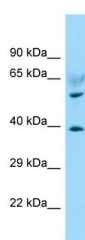
Bohm S.K.,et al.Submitted (JUL-1997) to the EMBL/GenBank/DDBJ databases.

Bechtel S.,et al.BMC Genomics 8:399-399(2007).

Ota T.,et al.Nat. Genet. 36:40-45(2004).

## Images

---



WB Suggested Anti-LPAR6 Antibody Titration: 1.0 µg/ml  
Positive Control: Fetal Heart

Please note: All products are 'FOR RESEARCH USE ONLY. NOT FOR USE IN DIAGNOSTIC OR THERAPEUTIC PROCEDURES'.