

LPAR6 Antibody - N-terminal region

Rabbit Polyclonal Antibody

Catalog # AI15369

Product Information

Application	WB
Primary Accession	P43657
Other Accession	NM_005767 , NP_005758
Reactivity	Human, Mouse, Rat, Rabbit, Zebrafish, Pig, Dog, Horse, Bovine, Sheep
Predicted	Human, Mouse, Rat, Rabbit, Zebrafish, Pig, Dog, Horse, Bovine, Sheep
Host	Rabbit
Clonality	Polyclonal
Calculated MW	39392

Additional Information

Gene ID	10161
Alias Symbol	ARWH1, LAH3, P2RY5, P2Y5
Other Names	Lysophosphatidic acid receptor 6, LPA receptor 6, LPA-6, Oleoyl-L-alpha-lysophosphatidic acid receptor, P2Y purinoceptor 5, P2Y5, Purinergic receptor 5, RB intron encoded G-protein coupled receptor, LPAR6, P2RY5
Format	Liquid. Purified antibody supplied in 1x PBS buffer with 0.09% (w/v) sodium azide and 2% sucrose.
Reconstitution & Storage	Add 50 μ l of distilled water. Final Anti-LPAR6 antibody concentration is 1 mg/ml in PBS buffer with 2% sucrose. For longer periods of storage, store at -20°C. Avoid repeat freeze-thaw cycles.
Precautions	LPAR6 Antibody - N-terminal region is for research use only and not for use in diagnostic or therapeutic procedures.

Protein Information

Name	LPAR6
Synonyms	P2RY5
Function	Binds to oleoyl-L-alpha-lysophosphatidic acid (LPA). Intracellular cAMP is involved in the receptor activation. Important for the maintenance of hair growth and texture.
Cellular Location	Cell membrane; Multi-pass membrane protein

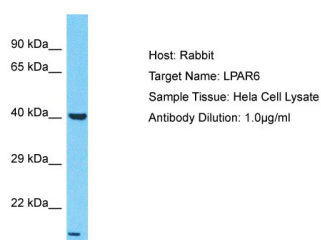
Tissue Location

Expressed ubiquitously, including in skin and hair follicle cells. Detected in both Henle's and Huxley's layers of the inner root sheath of the hair follicle and in suprabasal layers of the epidermis (at protein level). Expressed at low levels in peripheral blood leukocytes.

References

Toguchida J.,et al.Genomics 17:535-543(1993).
Herzog H.,et al.Genome Res. 6:858-861(1996).
Bohm S.K.,et al.Submitted (JUL-1997) to the EMBL/GenBank/DDBJ databases.
Bechtel S.,et al.BMC Genomics 8:399-399(2007).
Ota T.,et al.Nat. Genet. 36:40-45(2004).

Images



Host: Rabbit
Target Name: LPAR6
Sample Tissue: Hela Whole cell lysate
S
Antibody Dilution: 1.0µg/ml

Please note: All products are 'FOR RESEARCH USE ONLY. NOT FOR USE IN DIAGNOSTIC OR THERAPEUTIC PROCEDURES'.