

# LRRC1 Antibody - C-terminal region

Rabbit Polyclonal Antibody

Catalog # AI15370

## Product Information

---

<b>Application</b>	WB
<b>Primary Accession</b>	<a href="#">Q9BTT6</a>
<b>Other Accession</b>	<a href="#">NM_018214</a> , <a href="#">NP_060684</a>
<b>Reactivity</b>	Human, Mouse, Rat, Rabbit, Zebrafish, Pig, Dog, Guinea Pig, Horse, Bovine
<b>Predicted</b>	Human, Mouse, Rat, Rabbit, Zebrafish, Pig, Dog, Guinea Pig, Horse, Bovine
<b>Host</b>	Rabbit
<b>Clonality</b>	Polyclonal
<b>Calculated MW</b>	59242

## Additional Information

---

<b>Gene ID</b>	55227
<b>Alias Symbol</b>	LANO, dj523E19.1
<b>Other Names</b>	Leucine-rich repeat-containing protein 1, LANO adapter protein, LAP and no PDZ protein, LRRC1, LANO
<b>Format</b>	Liquid. Purified antibody supplied in 1x PBS buffer with 0.09% (w/v) sodium azide and 2% sucrose.
<b>Reconstitution &amp; Storage</b>	Add 50 ul of distilled water. Final anti-LRRC1 antibody concentration is 1 mg/ml in PBS buffer with 2% sucrose. For longer periods of storage, store at 20°C. Avoid repeat freeze-thaw cycles.
<b>Precautions</b>	LRRC1 Antibody - C-terminal region is for research use only and not for use in diagnostic or therapeutic procedures.

## Protein Information

---

<b>Name</b>	LRRC1
<b>Synonyms</b>	LANO
<b>Cellular Location</b>	Cytoplasm. Membrane; Peripheral membrane protein. Note=Localized at the basolateral side of epithelial cells
<b>Tissue Location</b>	Expressed strongly in testis and placenta, followed by heart, lung, kidney, thyroid, trachea, colon, prostate and pancreas

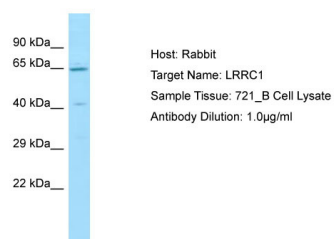
## References

---

Saito H.,et al.J. Biol. Chem. 276:32051-32055(2001).  
Suzuki T.,et al.Epilepsy Res. 50:265-275(2002).  
Ota T.,et al.Nat. Genet. 36:40-45(2004).  
Mungall A.J.,et al.Nature 425:805-811(2003).  
Mural R.J.,et al.Submitted (JUL-2005) to the EMBL/GenBank/DDBJ databases.

## Images

---



Host: Rabbit  
Target Name: LRRC1  
Sample Tissue: 721\_B Whole cell lysate  
S  
Antibody Dilution: 1.0µg/mlLRRC1 is strongly supported  
by BioGPS gene expression data to be expressed in  
Human 721\_B cells

Please note: All products are 'FOR RESEARCH USE ONLY. NOT FOR USE IN DIAGNOSTIC OR THERAPEUTIC PROCEDURES'.