

PRY Antibody - N-terminal region

Rabbit Polyclonal Antibody

Catalog # AI15375

Product Information

Application	WB
Primary Accession	O14603
Other Accession	NP_004667
Reactivity	Human
Host	Rabbit
Clonality	Polyclonal
Calculated MW	16512

Additional Information

Alias Symbol	PRY,
Other Names	PTPN13-like protein, Y-linked, Testis-specific PTP-BL-related Y protein, PRY, PRY1, PTPN13LY
Format	Liquid. Purified antibody supplied in 1x PBS buffer with 0.09% (w/v) sodium azide and 2% sucrose.
Reconstitution & Storage	Add 50 μ l of distilled water. Final Anti-PRY antibody concentration is 1 mg/ml in PBS buffer with 2% sucrose. For longer periods of storage, store at -20°C. Avoid repeat freeze-thaw cycles.
Precautions	PRY Antibody - N-terminal region is for research use only and not for use in diagnostic or therapeutic procedures.

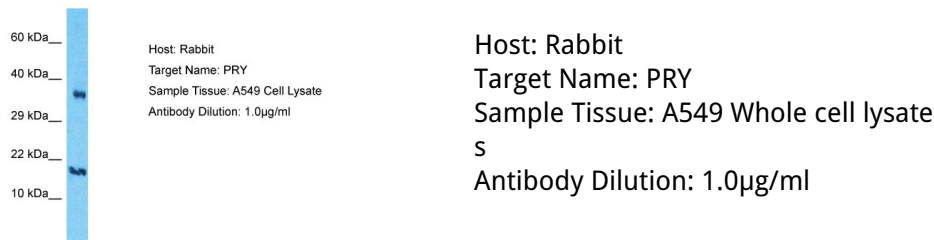
Protein Information

Name	PRY
Synonyms	PRY1, PTPN13LY
Tissue Location	Expressed in testis. Detected in spermatocytes, spermatids and spermatozoa (at protein level)

References

Lahn B.T., et al. Science 278:675-680(1997).
Lahn B.T., et al. Submitted (MAY-2002) to the EMBL/GenBank/DDBJ databases.
Skaletsky H., et al. Nature 423:825-837(2003).
Mural R.J., et al. Submitted (JUL-2005) to the EMBL/GenBank/DDBJ databases.

Images



Please note: All products are 'FOR RESEARCH USE ONLY. NOT FOR USE IN DIAGNOSTIC OR THERAPEUTIC PROCEDURES'.