

# RAB41 Antibody - N-terminal region

Rabbit Polyclonal Antibody

Catalog # AI15376

## Product Information

---

Application	WB
Primary Accession	<a href="#">Q5JT25</a>
Other Accession	<a href="#">NM_001032726</a> , <a href="#">NP_001027898</a>
Reactivity	Human
Predicted	Human
Host	Rabbit
Clonality	Polyclonal
Calculated MW	25038

## Additional Information

---

Gene ID	347517
Other Names	Ras-related protein Rab-41, RAB41
Format	Liquid. Purified antibody supplied in 1x PBS buffer with 0.09% (w/v) sodium azide and 2% sucrose.
Reconstitution & Storage	Add 50 ul of distilled water. Final anti-RAB41 antibody concentration is 1 mg/ml in PBS buffer with 2% sucrose. For longer periods of storage, store at 20°C. Avoid repeat freeze-thaw cycles.
Precautions	RAB41 Antibody - N-terminal region is for research use only and not for use in diagnostic or therapeutic procedures.

## Protein Information

---

Name	RAB41 ( <a href="#">HGNC:18293</a> )
Function	The small GTPases Rab are key regulators of intracellular membrane trafficking, from the formation of transport vesicles to their fusion with membranes. Rabs cycle between an inactive GDP-bound form and an active GTP-bound form that is able to recruit to membranes different sets of downstream effectors directly responsible for vesicle formation, movement, tethering and fusion (PubMed: <a href="#">23936529</a> ). RAB41 is required for normal Golgi ribbon organization and ER-to-Golgi trafficking (PubMed: <a href="#">23936529</a> ).
Cellular Location	Cytoplasm. Note=punctate localization concentrated in ruffled regions at the cell periphery
Tissue Location	Widely expressed in brain, testis, lung, heart, ovary, colon, kidney, uterus and

spleen but not in liver

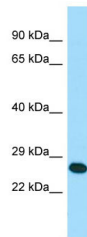
## References

---

Ross M.T.,et al.Nature 434:325-337(2005).  
Guo J.H.,et al.DNA Seq. 14:431-435(2003).  
Liu S.,et al.PLoS ONE 8:E71886-E71886(2013).

## Images

---



WB Suggested Anti-RAB41 Antibody Titration: 1.0 µg/ml  
Positive Control: MCF7 Whole Cell

Please note: All products are 'FOR RESEARCH USE ONLY. NOT FOR USE IN DIAGNOSTIC OR THERAPEUTIC PROCEDURES'.