

# SMTNL1 Antibody - N-terminal region

Rabbit Polyclonal Antibody

Catalog # AI15379

## Product Information

---

<b>Application</b>	WB
<b>Primary Accession</b>	<a href="#">A8MU46</a>
<b>Reactivity</b>	Human, Pig, Dog, Yeast
<b>Predicted</b>	Human, Pig, Dog, Yeast
<b>Host</b>	Rabbit
<b>Clonality</b>	Polyclonal
<b>Calculated MW</b>	52987

## Additional Information

---

<b>Gene ID</b>	219537
<b>Other Names</b>	Smoothelin-like protein 1, SMTNL1
<b>Format</b>	Liquid. Purified antibody supplied in 1x PBS buffer with 0.09% (w/v) sodium azide and 2% sucrose.
<b>Reconstitution &amp; Storage</b>	Add 50 $\mu$ l of distilled water. Final Anti-SMTNL1 antibody concentration is 1 mg/ml in PBS buffer with 2% sucrose. For longer periods of storage, store at -20°C. Avoid repeat freeze-thaw cycles.
<b>Precautions</b>	SMTNL1 Antibody - N-terminal region is for research use only and not for use in diagnostic or therapeutic procedures.

## Protein Information

---

<b>Name</b>	SMTNL1
<b>Function</b>	Plays a role in the regulation of contractile properties of both striated and smooth muscles. When unphosphorylated, may inhibit myosin dephosphorylation. Phosphorylation at Ser-299 reduces this inhibitory activity (By similarity).
<b>Cellular Location</b>	Cytoplasm, myofibril. Cytoplasm, myofibril, sarcomere, I band. Cytoplasm, myofibril, sarcomere, M line Nucleus. Note=Colocalizes with MYH2. In its unphosphorylated state, localizes to the cytoplasm (By similarity) Phosphorylation at Ser-301 promotes translocation to the nucleus (By similarity).
<b>Tissue Location</b>	Expressed in striated muscles, specifically in type 2a fibers (at protein level).

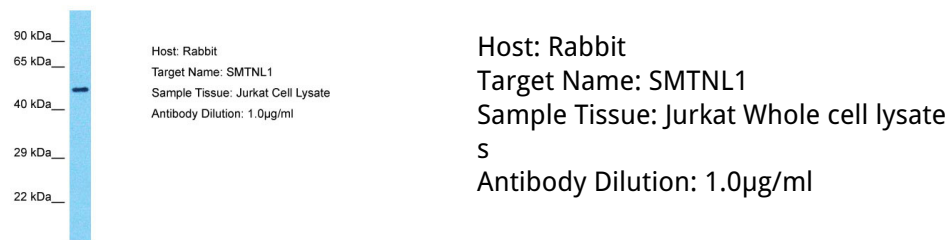
## References

---

Taylor T.D.,et al.Nature 440:497-500(2006).  
Wooldridge A.A.,et al.J. Biol. Chem. 283:11850-11859(2008).  
Lontay B.,et al.J. Biol. Chem. 285:29357-29366(2010).

## Images

---



Please note: All products are 'FOR RESEARCH USE ONLY. NOT FOR USE IN DIAGNOSTIC OR THERAPEUTIC PROCEDURES'.