

SYTL5 Antibody - middle region

Rabbit Polyclonal Antibody

Catalog # AI15382

Product Information

Application	WB
Primary Accession	Q8TDW5
Other Accession	NM_001163334 , EAW59450
Reactivity	Human, Rat, Rabbit, Pig, Horse
Predicted	Human, Rat, Rabbit, Pig, Horse
Host	Rabbit
Clonality	Polyclonal
Calculated MW	81523

Additional Information

Gene ID	94122
Alias Symbol	slp5
Other Names	Synaptotagmin-like protein 5, SYTL5, SLP5
Format	Liquid. Purified antibody supplied in 1x PBS buffer with 0.09% (w/v) sodium azide and 2% sucrose.
Reconstitution & Storage	Add 50 ul of distilled water. Final anti-SYTL5 antibody concentration is 1 mg/ml in PBS buffer with 2% sucrose. For longer periods of storage, store at 20°C. Avoid repeat freeze-thaw cycles.
Precautions	SYTL5 Antibody - middle region is for research use only and not for use in diagnostic or therapeutic procedures.

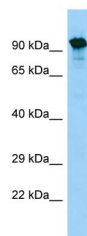
Protein Information

Name	SYTL5
Synonyms	SLP5
Function	May act as Rab effector protein and play a role in vesicle trafficking. Binds phospholipids.
Cellular Location	Membrane; Peripheral membrane protein
Tissue Location	Highly expressed in placenta and liver.

References

Kuroda T.S.,et al.Biochem. Biophys. Res. Commun. 293:899-906(2002).
Ross M.T.,et al.Nature 434:325-337(2005).

Images



WB Suggested Anti-SYTL5 Antibody Titration: 1.0 µg/ml
Positive Control: HepG2 Whole Cell

Please note: All products are 'FOR RESEARCH USE ONLY. NOT FOR USE IN DIAGNOSTIC OR THERAPEUTIC PROCEDURES'.