

# ANKFY1 Antibody - C-terminal region

Rabbit Polyclonal Antibody

Catalog # AI15383

## Product Information

---

<b>Application</b>	WB
<b>Primary Accession</b>	<a href="#">Q9P2R3</a>
<b>Other Accession</b>	<a href="#">NM_020740</a> , <a href="#">NP_065791</a>
<b>Reactivity</b>	Human
<b>Host</b>	Rabbit
<b>Clonality</b>	Polyclonal
<b>Calculated MW</b>	128399

## Additional Information

---

<b>Gene ID</b>	51479
<b>Alias Symbol</b> <b>Other Names</b>	ANKHZN, DKFZp686M19106, KIAA1255, ZFYVE14 Rabankyrin-5, Rank-5, Ankyrin repeat and FYVE domain-containing protein 1, Ankyrin repeats hooked to a zinc finger motif, ANKFY1, ANKHZN, KIAA1255
<b>Format</b>	Liquid. Purified antibody supplied in 1x PBS buffer with 0.09% (w/v) sodium azide and 2% sucrose.
<b>Reconstitution &amp; Storage</b>	Add 50 ul of distilled water. Final anti-ANKFY1 antibody concentration is 1 mg/ml in PBS buffer with 2% sucrose. For longer periods of storage, store at 20°C. Avoid repeat freeze-thaw cycles.
<b>Precautions</b>	ANKFY1 Antibody - C-terminal region is for research use only and not for use in diagnostic or therapeutic procedures.

## Protein Information

---

<b>Name</b>	ANKFY1
<b>Synonyms</b>	ANKHZN, KIAA1255
<b>Function</b>	Proposed effector of Rab5. Binds to phosphatidylinositol 3- phosphate (PI(3)P). Involved in homotypic early endosome fusion and to a lesser extent in heterotypic fusion of clathrin-coated vesicles with early endosomes. Involved in macropinocytosis; the function is dependent on Rab5-GTP. Required for correct endosomal localization. Involved in the internalization and trafficking of activated tyrosine kinase receptors such as PDGFRB. Regulates the subcellular localization of the retromer complex in a EHD1-dependent manner. Involved in endosome-to-Golgi transport and biosynthetic transport to late endosomes and lysosomes indicative for a

regulation of retromer complex-mediated retrograde transport.

**Cellular Location**

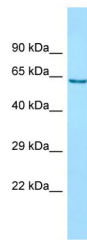
Cytoplasm. Endosome membrane; Peripheral membrane protein. Early endosome. Note=Also associated with endosomal membranes. Localizes to macropinosomes.

**Tissue Location**

High expression in whole adult brain and intermediate expression in all other tissues and specific brain regions examined, including fetal brain.

## Images

---



WB Suggested Anti-ANKFY1 Antibody Titration: 1.0 µg/ml  
Positive Control: 721\_B Whole CellANKFY1 is supported by  
BioGPS gene expression data to be expressed in 721\_B

Please note: All products are 'FOR RESEARCH USE ONLY. NOT FOR USE IN DIAGNOSTIC OR THERAPEUTIC PROCEDURES'.