

C12orf10 Antibody - N-terminal region

Rabbit Polyclonal Antibody

Catalog # AI15387

Product Information

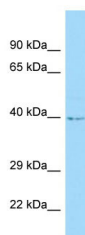
Application	WB
Primary Accession	Q86UA3
Other Accession	NM_021640 , NP_067653
Reactivity	Human, Rat, Horse
Predicted	Human, Rat, Horse
Host	Rabbit
Clonality	Polyclonal
Calculated MW	41 kDa

Additional Information

Alias Symbol	MST024, MSTP024, MYG, MYG1
Format	Liquid. Purified antibody supplied in 1x PBS buffer with 0.09% (w/v) sodium azide and 2% sucrose.
Reconstitution & Storage	Add 50 ul of distilled water. Final anti-C12orf10 antibody concentration is 1 mg/ml in PBS buffer with 2% sucrose. For longer periods of storage, store at 20°C. Avoid repeat freeze-thaw cycles.
Precautions	C12orf10 Antibody - N-terminal region is for research use only and not for use in diagnostic or therapeutic procedures.

Protein Information

Images



WB Suggested Anti-C12orf10 Antibody Titration: 1.0 µg/ml
Positive Control: 293T Whole Cell
C12orf10 is supported by BioGPS gene expression data to be expressed in HEK293T