

CSPP1 Antibody - N-terminal region

Rabbit Polyclonal Antibody

Catalog # AI15392

Product Information

Application	WB
Primary Accession	Q1MSJ5
Other Accession	NM_024790 , NP_079066
Reactivity	Human, Mouse, Rat, Rabbit, Dog, Guinea Pig, Horse, Bovine
Predicted	Human, Mouse, Rat, Rabbit, Pig, Dog, Guinea Pig, Horse, Bovine
Host	Rabbit
Clonality	Polyclonal
Calculated MW	145522

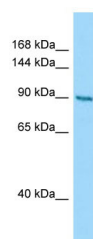
Additional Information

Gene ID	79848
Alias Symbol	CSPP, FLJ22490, FLJ38886
Other Names	Centrosome and spindle pole-associated protein 1, CSPP1, CSPP
Format	Liquid. Purified antibody supplied in 1x PBS buffer with 0.09% (w/v) sodium azide and 2% sucrose.
Reconstitution & Storage	Add 50 ul of distilled water. Final anti-CSPP1 antibody concentration is 1 mg/ml in PBS buffer with 2% sucrose. For longer periods of storage, store at 20°C. Avoid repeat freeze-thaw cycles.
Precautions	CSPP1 Antibody - N-terminal region is for research use only and not for use in diagnostic or therapeutic procedures.

Protein Information

Name	CSPP1
Synonyms	CSPP
Function	May play a role in cell-cycle-dependent microtubule organization.
Cellular Location	Cytoplasm, cytoskeleton, microtubule organizing center, centrosome. Cytoplasm, cytoskeleton, spindle. Cytoplasm, cytoskeleton, spindle pole. Cell projection, cilium. Note=Associated with mitotic spindles.
Tissue Location	Expressed in adult and fetal brain with enrichment in the cerebellum. Detected in testis.

Images



Host: Rabbit
Target Name: CSPP1
Sample Tissue: PANC1 Whole cell lysate
S
Antibody Dilution: 1.0µg/ml

Please note: All products are 'FOR RESEARCH USE ONLY. NOT FOR USE IN DIAGNOSTIC OR THERAPEUTIC PROCEDURES'.