

# DAND5 Antibody - C-terminal region

Rabbit Polyclonal Antibody

Catalog # AI15393

## Product Information

---

Application	WB
Primary Accession	<a href="#">Q8N907</a>
Other Accession	<a href="#">NM_152654</a> , <a href="#">NP_689867</a>
Reactivity	Human
Predicted	Human
Host	Rabbit
Clonality	Polyclonal
Calculated MW	20180

## Additional Information

---

Gene ID	199699
Alias Symbol Other Names	CER2, CERL2, CKTSF1B3, COCO, CRL2, DANTE, GREM3, MGC126849, SP1 DAN domain family member 5, Cerberus-like protein 2, Cerl-2, Cysteine knot superfamily 1, BMP antagonist 3, Gremlin-3, DAND5, CER2, CKTSF1B3, GREM3, SP1
Format	Liquid. Purified antibody supplied in 1x PBS buffer with 0.09% (w/v) sodium azide and 2% sucrose.
Reconstitution & Storage	Add 50 ul of distilled water. Final anti-DAND5 antibody concentration is 1 mg/ml in PBS buffer with 2% sucrose. For longer periods of storage, store at 20°C. Avoid repeat freeze-thaw cycles.
Precautions	DAND5 Antibody - C-terminal region is for research use only and not for use in diagnostic or therapeutic procedures.

## Protein Information

---

Name	DAND5
Function	Antagonist of the extracellular signaling protein NODAL, which is required for correct left-right patterning during embryonic development (By similarity). Antagonist of BMP and TGF-beta signaling (PubMed: <a href="#">33587337</a> ). Independently of its role in left-right axis establishment, plays a role during heart development, possibly through the regulation of TGF-beta/Nodal signaling pathway (By similarity). Displays anti-angiogenic activity by inhibiting endothelial sprouting, migration, and proliferation. Once internalized by endothelial cells, may alter their redox and glycolytic balance (PubMed: <a href="#">33587337</a> ).

<b>Cellular Location</b>	Secreted. Note=Circulating DAND5 may be uptaken by endothelial cells and transported to mitochondria
<b>Tissue Location</b>	Expressed in the retina, in inner segments of photoreceptors, at or close to the outer plexiform layer and in the ganglion cell layer (at protein level).

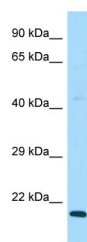
## References

---

Itoh N.,et al.Submitted (AUG-2001) to the EMBL/GenBank/DDBJ databases.  
Ota T.,et al.Nat. Genet. 36:40-45(2004).  
Katoh M.,et al.Oncol. Rep. 12:423-427(2004).

## Images

---



WB Suggested Anti-DAND5 Antibody Titration: 1.0 µg/ml  
Positive Control: MCF7 Whole Cell

Please note: All products are 'FOR RESEARCH USE ONLY. NOT FOR USE IN DIAGNOSTIC OR THERAPEUTIC PROCEDURES'.