

# LIPK Antibody - N-terminal region

Rabbit Polyclonal Antibody

Catalog # AI15398

## Product Information

---

<b>Application</b>	WB
<b>Primary Accession</b>	<a href="#">Q5VXJ0</a>
<b>Other Accession</b>	<a href="#">NM_001080518</a> , <a href="#">NP_001073987</a>
<b>Reactivity</b>	Human
<b>Predicted</b>	Human
<b>Host</b>	Rabbit
<b>Clonality</b>	Polyclonal
<b>Calculated MW</b>	45563

## Additional Information

---

<b>Gene ID</b>	643414
<b>Alias Symbol</b>	LIPL2, bA186O14.2
<b>Other Names</b>	Lipase member K, 3.1.1.-, Lipase-like abhydrolase domain-containing protein 2, LIPK, LIPL2
<b>Format</b>	Liquid. Purified antibody supplied in 1x PBS buffer with 0.09% (w/v) sodium azide and 2% sucrose.
<b>Reconstitution &amp; Storage</b>	Add 50 ul of distilled water. Final anti-LIPK antibody concentration is 1 mg/ml in PBS buffer with 2% sucrose. For longer periods of storage, store at 20°C. Avoid repeat freeze-thaw cycles.
<b>Precautions</b>	LIPK Antibody - N-terminal region is for research use only and not for use in diagnostic or therapeutic procedures.

## Protein Information

---

<b>Name</b>	LIPK
<b>Synonyms</b>	LIPL2
<b>Function</b>	Plays a highly specific role in the last step of keratinocyte differentiation. May have an essential function in lipid metabolism of the most differentiated epidermal layers.
<b>Cellular Location</b>	Secreted.
<b>Tissue Location</b>	Exclusively expressed in the epidermis within the granular keratinocytes.

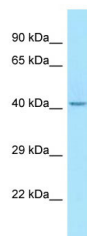
## References

---

Toulza E.,et al.Genome Biol. 8:R107.1-R107.23(2007).  
Deloukas P.,et al.Nature 429:375-381(2004).

## Images

---



WB Suggested Anti-LIPK Antibody Titration: 1.0 µg/ml  
Positive Control: HepG2 Whole Cell

Please note: All products are 'FOR RESEARCH USE ONLY. NOT FOR USE IN DIAGNOSTIC OR THERAPEUTIC PROCEDURES'.