

SUCLG2 Antibody - C-terminal region

Rabbit Polyclonal Antibody

Catalog # AI15412

Product Information

Application	WB
Primary Accession	Q96I99
Other Accession	NM_001177599 , NP_001171070
Reactivity	Human, Mouse, Rat, Rabbit, Pig, Dog, Guinea Pig, Horse, Bovine
Predicted	Human, Mouse, Rat, Rabbit, Pig, Dog, Guinea Pig, Horse, Bovine
Host	Rabbit
Clonality	Polyclonal
Calculated MW	46511

Additional Information

Gene ID	8801
Alias Symbol	G-BETA, GBETA
Other Names	Succinyl-CoA ligase [GDP-forming] subunit beta, mitochondrial, 6.2.1.4, GTP-specific succinyl-CoA synthetase subunit beta, Succinyl-CoA synthetase beta-G chain, SCS-betaG, SUCLG2
Format	Liquid. Purified antibody supplied in 1x PBS buffer with 0.09% (w/v) sodium azide and 2% sucrose.
Reconstitution & Storage	Add 50 ul of distilled water. Final anti-SUCLG2 antibody concentration is 1 mg/ml in PBS buffer with 2% sucrose. For longer periods of storage, store at 20°C. Avoid repeat freeze-thaw cycles.
Precautions	SUCLG2 Antibody - C-terminal region is for research use only and not for use in diagnostic or therapeutic procedures.

Protein Information

Name	SUCLG2 {ECO:0000255 HAMAP-Rule:MF_03221}
Function	GTP-specific succinyl-CoA synthetase functions in the citric acid cycle (TCA), coupling the hydrolysis of succinyl-CoA to the synthesis of GTP and thus represents the only step of substrate-level phosphorylation in the TCA. The beta subunit provides nucleotide specificity of the enzyme and binds the substrate succinate, while the binding sites for coenzyme A and phosphate are found in the alpha subunit.
Cellular Location	Mitochondrion {ECO:0000255 HAMAP-Rule:MF_03221}.

Tissue Location

Mainly expressed in liver, kidney, heart, spleen and skeletal muscle. Also found in intestine and colon, and in low amounts in lung, brain, prostate, testis and ovary

References

Ota T.,et al.Nat. Genet. 36:40-45(2004).

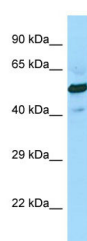
Muzny D.M.,et al.Nature 440:1194-1198(2006).

Johnson J.D.,et al.J. Biol. Chem. 273:27580-27586(1998).

Mei G.,et al.Submitted (FEB-1999) to the EMBL/GenBank/DDBJ databases.

Choudhary C.,et al.Science 325:834-840(2009).

Images



WB Suggested Anti-SUCLG2 Antibody Titration: 1.0 µg/ml
Positive Control: Fetal Heart

Please note: All products are 'FOR RESEARCH USE ONLY. NOT FOR USE IN DIAGNOSTIC OR THERAPEUTIC PROCEDURES'.