

WDR18 Antibody - N-terminal region

Rabbit Polyclonal Antibody

Catalog # AI15416

Product Information

Application	WB
Primary Accession	Q9BV38
Other Accession	NM_024100 , NP_077005
Reactivity	Human, Mouse, Rat, Pig, Guinea Pig, Horse, Bovine
Predicted	Human, Mouse, Rat, Pig, Guinea Pig, Horse, Bovine
Host	Rabbit
Clonality	Polyclonal
Calculated MW	47405

Additional Information

Gene ID	57418
Alias Symbol	MGC2436, R32184_1
Other Names	WD repeat-containing protein 18, WDR18
Format	Liquid. Purified antibody supplied in 1x PBS buffer with 0.09% (w/v) sodium azide and 2% sucrose.
Reconstitution & Storage	Add 50 ul of distilled water. Final anti-WDR18 antibody concentration is 1 mg/ml in PBS buffer with 2% sucrose. For longer periods of storage, store at 20°C. Avoid repeat freeze-thaw cycles.
Precautions	WDR18 Antibody - N-terminal region is for research use only and not for use in diagnostic or therapeutic procedures.

Protein Information

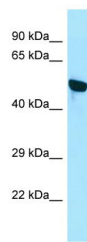
Name	WDR18
Function	Functions as a component of the Five Friends of Methylated CHTOP (5FMC) complex; the 5FMC complex is recruited to ZNF148 by methylated CHTOP, leading to desumoylation of ZNF148 and subsequent transactivation of ZNF148 target genes (PubMed: 22872859). Component of the PELP1 complex involved in the nucleolar steps of 28S rRNA maturation and the subsequent nucleoplasmic transit of the pre-60S ribosomal subunit (PubMed: 21326211). May play a role during development (By similarity).
Cellular Location	Nucleus, nucleolus. Nucleus, nucleoplasm {ECO:0000250 UniProtKB:Q4VBE8}. Cytoplasm {ECO:0000250 UniProtKB:Q4VBE8}. Dynein axonemal particle {ECO:0000250 UniProtKB:A0A1L8HX76}. Note=Mainly found in the

nucleoplasm, with low levels detected in the cytoplasmic and chromatin fractions. {ECO:0000250|UniProtKB:Q4VBE8}

References

Grimwood J.,et al.Nature 428:529-535(2004).
Burkard T.R.,et al.BMC Syst. Biol. 5:17-17(2011).
Fanis P.,et al.Mol. Cell. Proteomics 11:1263-1273(2012).

Images



WB Suggested Anti-WDR18 Antibody Titration: 1.0 µg/ml
Positive Control: Jurkat Whole Cell
WDR18 is supported by
BioGPS gene expression data to be expressed in Jurkat

Please note: All products are 'FOR RESEARCH USE ONLY. NOT FOR USE IN DIAGNOSTIC OR THERAPEUTIC PROCEDURES'.