

# C9orf24 Antibody - N-terminal region

Rabbit Polyclonal Antibody

Catalog # AI15422

## Product Information

<b>Application</b>	WB
<b>Primary Accession</b>	<a href="#">Q8NCR6</a>
<b>Other Accession</b>	<a href="#">NM_032596</a> , <a href="#">NP_115985</a>
<b>Reactivity</b>	Human, Mouse, Rat, Rabbit, Pig, Dog, Guinea Pig, Horse, Bovine
<b>Predicted</b>	Human, Mouse, Rat, Rabbit, Pig, Dog, Guinea Pig, Horse, Bovine
<b>Host</b>	Rabbit
<b>Clonality</b>	Polyclonal
<b>Calculated MW</b>	30167

## Additional Information

<b>Gene ID</b>	84688
<b>Alias Symbol</b>	CBE1, MGC32921, MGC33614, NYD-SP22, bA573M23.4
<b>Other Names</b>	Spermatid-specific manchette-related protein 1, Ciliated bronchial epithelial protein 1, Testis development protein NYD-SP22, SMRP1, C9orf24, CBE1
<b>Format</b>	Liquid. Purified antibody supplied in 1x PBS buffer with 0.09% (w/v) sodium azide and 2% sucrose.
<b>Reconstitution &amp; Storage</b>	Add 50 ul of distilled water. Final anti-C9orf24 antibody concentration is 1 mg/ml in PBS buffer with 2% sucrose. For longer periods of storage, store at 20°C. Avoid repeat freeze-thaw cycles.
<b>Precautions</b>	C9orf24 Antibody - N-terminal region is for research use only and not for use in diagnostic or therapeutic procedures.

## Protein Information

<b>Name</b>	SPMIP6 ( <a href="#">HGNC:19919</a> )
<b>Function</b>	May participate in intramanchette transport and midpiece formation of the sperm tail. May play a potential role in somatic cell proliferation.
<b>Cellular Location</b>	Cytoplasm, cytoskeleton {ECO:0000250 UniProtKB:Q2MH31}. Nucleus Cytoplasm. Mitochondrion {ECO:0000250 UniProtKB:Q2MH31}. Cytoplasm, cytoskeleton, flagellum axoneme. Note=During spermatid elongation (step 10), localizes along the length of the manchette and later during the elongation process only at the distal ends of spermatid manchette (step 12). In late elongated spermatids (step 16), in the final steps of spermiogenesis, localization is restricted to the midpiece of the flagellum. Localizes at the

contractile ring in dividing cells (By similarity). Predominantly perinuclear in bronchial epithelial cells but also detected in the nucleus in some primary epithelial cells and in a number of cell lines (PubMed:15242845) {ECO:0000250|UniProtKB:Q2MH31, ECO:0000269|PubMed:15242845}

#### Tissue Location

Expressed in testis (PubMed:28601408). Strongly expressed in ciliated epithelial cells with lower levels in goblet cells (at protein level) (PubMed:15242845)

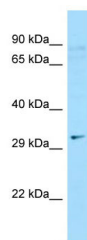
## References

---

Yoshisue H.,et al.Am. J. Respir. Cell Mol. Biol. 31:491-500(2004).  
Sha J.H.,et al.Submitted (APR-2001) to the EMBL/GenBank/DDBJ databases.  
Ota T.,et al.Nat. Genet. 36:40-45(2004).  
Humphray S.J.,et al.Nature 429:369-374(2004).  
Haitchi H.M.,et al.Eur. Respir. J. 33:1095-1104(2009).

## Images

---



WB Suggested Anti-C9orf24 Antibody Titration: 1.0 µg/ml  
Positive Control: Hela Whole cell

Please note: All products are 'FOR RESEARCH USE ONLY. NOT FOR USE IN DIAGNOSTIC OR THERAPEUTIC PROCEDURES'.