

CLEC3A Antibody - N-terminal region

Rabbit Polyclonal Antibody

Catalog # AI15424

Product Information

Application	WB
Primary Accession	O75596
Other Accession	NM_005752 , NP_005743
Reactivity	Human, Mouse, Rat, Rabbit, Dog, Guinea Pig, Horse, Bovine
Predicted	Human, Mouse, Rat, Rabbit, Pig, Dog, Guinea Pig, Horse, Bovine
Host	Rabbit
Clonality	Polyclonal
Calculated MW	22233

Additional Information

Gene ID	10143
Alias Symbol	CLECSF1, MGC129558, MGC129559
Other Names	C-type lectin domain family 3 member A, C-type lectin superfamily member 1, Cartilage-derived C-type lectin, CLEC3A, CLECSF1
Format	Liquid. Purified antibody supplied in 1x PBS buffer with 0.09% (w/v) sodium azide and 2% sucrose.
Reconstitution & Storage	Add 50 ul of distilled water. Final anti-CLEC3A antibody concentration is 1 mg/ml in PBS buffer with 2% sucrose. For longer periods of storage, store at 20°C. Avoid repeat freeze-thaw cycles.
Precautions	CLEC3A Antibody - N-terminal region is for research use only and not for use in diagnostic or therapeutic procedures.

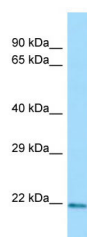
Protein Information

Name	CLEC3A
Synonyms	CLECSF1
Function	Promotes cell adhesion to laminin-332 and fibronectin.
Cellular Location	Secreted.
Tissue Location	Restricted to cartilage and breast. Also expressed in breast cancers.

References

Neame P.J.,et al.Biochim. Biophys. Acta 1446:193-202(1999).
Clark H.F.,et al.Genome Res. 13:2265-2270(2003).
Ota T.,et al.Nat. Genet. 36:40-45(2004).
Tsunezumi J.,et al.J. Cell. Biochem. 106:693-702(2009).

Images



WB Suggested Anti-CLEC3A Antibody Titration: 1.0 µg/ml
Positive Control: 293T Whole Cell

Please note: All products are 'FOR RESEARCH USE ONLY. NOT FOR USE IN DIAGNOSTIC OR THERAPEUTIC PROCEDURES'.