

EPN3 Antibody - C-terminal region

Rabbit Polyclonal Antibody

Catalog # AI15428

Product Information

Application	WB
Primary Accession	Q9H201
Other Accession	NM_017957 , NP_060427
Reactivity	Human, Mouse, Rat, Rabbit, Dog, Guinea Pig, Horse, Bovine
Predicted	Human, Mouse, Rat, Rabbit, Pig, Dog, Guinea Pig, Horse, Bovine
Host	Rabbit
Clonality	Polyclonal
Calculated MW	68222

Additional Information

Gene ID	55040
Other Names	Epsin-3, EPS-15-interacting protein 3, EPN3
Format	Liquid. Purified antibody supplied in 1x PBS buffer with 0.09% (w/v) sodium azide and 2% sucrose.
Reconstitution & Storage	Add 50 ul of distilled water. Final anti-EPN3 antibody concentration is 1 mg/ml in PBS buffer with 2% sucrose. For longer periods of storage, store at 20°C. Avoid repeat freeze-thaw cycles.
Precautions	EPN3 Antibody - C-terminal region is for research use only and not for use in diagnostic or therapeutic procedures.

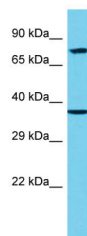
Protein Information

Name	EPN3
Cellular Location	Cytoplasm. Cytoplasm, perinuclear region Cytoplasmic vesicle, clathrin-coated vesicle. Nucleus Note=Concentrated in the perinuclear region and associated with clathrin-coated vesicles close to the cell periphery. May shuttle to the nucleus
Tissue Location	Detected in migrating keratinocytes from wounded skin, but not in differentiating keratinocytes or in normal skin Detected in chronic wounds, basal cell carcinoma and ulcerative colitis.

References

Spradling K.D.,et al.J. Biol. Chem. 276:29257-29267(2001).
Ota T.,et al.Nat. Genet. 36:40-45(2004).
Mural R.J.,et al.Submitted (SEP-2005) to the EMBL/GenBank/DDBJ databases.

Images



Host: Rabbit
Target Name: EPN3
Sample Tissue: 293T Whole cell lysate
S
Antibody Dilution: 1.0µg/ml

Please note: All products are 'FOR RESEARCH USE ONLY. NOT FOR USE IN DIAGNOSTIC OR THERAPEUTIC PROCEDURES'.