

# FCGR2C Antibody - N-terminal region

Rabbit Polyclonal Antibody

Catalog # AI15430

## Product Information

---

<b>Application</b>	WB
<b>Primary Accession</b>	<a href="#">P31995</a>
<b>Other Accession</b>	<a href="#">NM_201563</a> , <a href="#">NP_963857</a>
<b>Reactivity</b>	Human, Rabbit, Guinea Pig, Horse, Bovine
<b>Predicted</b>	Human, Rabbit, Pig, Guinea Pig, Horse, Bovine
<b>Host</b>	Rabbit
<b>Clonality</b>	Polyclonal
<b>Calculated MW</b>	35578

## Additional Information

---

<b>Gene ID</b>	9103
<b>Alias Symbol</b>	CD32, CD32C, CDW32, FCG2, FCRIIC, IGFR2
<b>Other Names</b>	Low affinity immunoglobulin gamma Fc region receptor II-c, IgG Fc receptor II-c, CDw32, Fc-gamma RII-c, Fc-gamma-RIIc, FcRII-c, CD32, FCGR2C, CD32, FCG2, IGFR2
<b>Format</b>	Liquid. Purified antibody supplied in 1x PBS buffer with 0.09% (w/v) sodium azide and 2% sucrose.
<b>Reconstitution &amp; Storage</b>	Add 50 ul of distilled water. Final anti-FCGR2C antibody concentration is 1 mg/ml in PBS buffer with 2% sucrose. For longer periods of storage, store at 20°C. Avoid repeat freeze-thaw cycles.
<b>Precautions</b>	FCGR2C Antibody - N-terminal region is for research use only and not for use in diagnostic or therapeutic procedures.

## Protein Information

---

<b>Name</b>	FCGR2C
<b>Synonyms</b>	CD32, FCG2, IGFR2
<b>Function</b>	Receptor for the Fc region of complexed immunoglobulins gamma. Low affinity receptor. Involved in a variety of effector and regulatory functions such as phagocytosis of immune complexes and modulation of antibody production by B-cells.
<b>Cellular Location</b>	[Isoform IIC4]: Cytoplasm. [Isoform IIC2]: Cell membrane; Single-pass type I membrane protein

## Tissue Location

Isoform IIC1 is detected in monocytes, macrophages, polymorphonuclear cells and natural killer cells

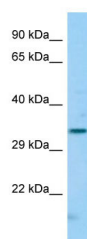
## References

---

Stuart S.G.,et al.EMBO J. 8:3657-3666(1989).  
Metes D.,et al.Blood 91:2369-2380(1998).  
Bewarder N.,et al.Mol. Cell. Biol. 16:4735-4743(1996).  
Mimoto F.,et al.Protein Eng. Des. Sel. 26:589-598(2013).

## Images

---



Host: Rabbit  
Target Name: FCGR2C  
Sample Tissue: Hela Whole cell lysate  
S  
Antibody Dilution: 1.0µg/ml

Please note: All products are 'FOR RESEARCH USE ONLY. NOT FOR USE IN DIAGNOSTIC OR THERAPEUTIC PROCEDURES'.