

ISOC1 Antibody - C-terminal region

Rabbit Polyclonal Antibody

Catalog # AI15434

Product Information

| | |
|--------------------------|---|
| Application | WB |
| Primary Accession | Q96CN7 |
| Other Accession | NM_016048 , NP_057132 |
| Reactivity | Human, Mouse, Rat, Rabbit, Zebrafish, Pig, Dog, Guinea Pig, Horse, Bovine |
| Predicted | Human, Mouse, Rat, Rabbit, Zebrafish, Pig, Dog, Guinea Pig, Horse, Bovine |
| Host | Rabbit |
| Clonality | Polyclonal |
| Calculated MW | 32237 |

Additional Information

| | |
|-------------------------------------|--|
| Gene ID | 51015 |
| Alias Symbol | CGI-111 |
| Other Names | Isochorismatase domain-containing protein 1, ISOC1 |
| Format | Liquid. Purified antibody supplied in 1x PBS buffer with 0.09% (w/v) sodium azide and 2% sucrose. |
| Reconstitution & Storage | Add 50 ul of distilled water. Final anti-ISOC1 antibody concentration is 1 mg/ml in PBS buffer with 2% sucrose. For longer periods of storage, store at 20°C. Avoid repeat freeze-thaw cycles. |
| Precautions | ISOC1 Antibody - C-terminal region is for research use only and not for use in diagnostic or therapeutic procedures. |

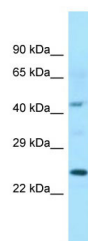
Protein Information

| | |
|-------------|-------|
| Name | ISOC1 |
|-------------|-------|

References

Burkard T.R., et al. BMC Syst. Biol. 5:17-17(2011).

Images



WB Suggested Anti-ISOC1 Antibody Titration: 1.0 µg/ml
Positive Control: Fetal Heart

Please note: All products are 'FOR RESEARCH USE ONLY. NOT FOR USE IN DIAGNOSTIC OR THERAPEUTIC PROCEDURES'.