

# MACROD2 Antibody - C-terminal region

Rabbit Polyclonal Antibody

Catalog # AI15439

## Product Information

---

<b>Application</b>	WB
<b>Primary Accession</b>	<a href="#">A1Z1Q3</a>
<b>Other Accession</b>	<a href="#">NM_001033087</a> , <a href="#">NP_001028259</a>
<b>Reactivity</b>	Human, Horse
<b>Predicted</b>	Human, Horse
<b>Host</b>	Rabbit
<b>Clonality</b>	Polyclonal
<b>Calculated MW</b>	47421

## Additional Information

---

<b>Gene ID</b>	140733
<b>Alias Symbol</b>	C20orf133
<b>Other Names</b>	O-acetyl-ADP-ribose deacetylase MACROD2, 3.2.2.-, 3.5.1.-, MACRO domain-containing protein 2, [Protein ADP-ribosylglutamate] hydrolase, MACROD2, C20orf133
<b>Format</b>	Liquid. Purified antibody supplied in 1x PBS buffer with 0.09% (w/v) sodium azide and 2% sucrose.
<b>Reconstitution &amp; Storage</b>	Add 50 ul of distilled water. Final anti-MACROD2 antibody concentration is 1 mg/ml in PBS buffer with 2% sucrose. For longer periods of storage, store at 20°C. Avoid repeat freeze-thaw cycles.
<b>Precautions</b>	MACROD2 Antibody - C-terminal region is for research use only and not for use in diagnostic or therapeutic procedures.

## Protein Information

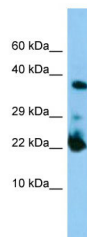
---

<b>Name</b>	MACROD2 {ECO:0000303 PubMed:23474712, ECO:0000312 HGNC:HGNC:16126}
<b>Function</b>	Removes ADP-ribose from aspartate and glutamate residues in proteins bearing a single ADP-ribose moiety (PubMed: <a href="#">23474712</a> , PubMed: <a href="#">23474714</a> ). Inactive towards proteins bearing poly-ADP-ribose (PubMed: <a href="#">23474712</a> , PubMed: <a href="#">23474714</a> ). Deacetylates O-acetyl-ADP ribose, a signaling molecule generated by the deacetylation of acetylated lysine residues in histones and other proteins (PubMed: <a href="#">21257746</a> ).
<b>Cellular Location</b>	Nucleus. Note=Recruited to DNA lesions, probably via mono-APD-ribosylated

proteins.

## Images

---



Host: Rabbit  
Target Name: MACROD2  
Sample Tissue: HepG2 Whole cell lysate  
S  
Antibody Dilution: 1.0µg/ml

Please note: All products are 'FOR RESEARCH USE ONLY. NOT FOR USE IN DIAGNOSTIC OR THERAPEUTIC PROCEDURES'.