

MEPCE Antibody - middle region

Rabbit Polyclonal Antibody

Catalog # AI15441

Product Information

Application	WB
Primary Accession	Q7L2J0
Other Accession	NM_019606 , NP_062552
Reactivity	Human, Rat, Rabbit, Dog, Guinea Pig
Predicted	Human, Rat, Rabbit, Pig, Dog, Guinea Pig
Host	Rabbit
Clonality	Polyclonal
Calculated MW	74355

Additional Information

Gene ID	56257
Alias Symbol	BCDIN3, FLJ20257
Other Names	7SK snRNA methylphosphate capping enzyme, MePCE, 2.1.1.-, Bicoid-interacting protein 3 homolog, Bin3 homolog, MEPCE, BCDIN3
Format	Liquid. Purified antibody supplied in 1x PBS buffer with 0.09% (w/v) sodium azide and 2% sucrose.
Reconstitution & Storage	Add 50 ul of distilled water. Final anti-MEPCE antibody concentration is 1 mg/ml in PBS buffer with 2% sucrose. For longer periods of storage, store at 20°C. Avoid repeat freeze-thaw cycles.
Precautions	MEPCE Antibody - middle region is for research use only and not for use in diagnostic or therapeutic procedures.

Protein Information

Name	MEPCE {ECO:0000303 PubMed:30559425, ECO:0000312 HGNC:HGNC:20247}
Function	S-adenosyl-L-methionine-dependent methyltransferase that adds a methylphosphate cap at the 5'-end of 7SK snRNA (7SK RNA), leading to stabilize it (PubMed: 17643375 , PubMed: 19906723 , PubMed: 30559425). Also has a non-enzymatic function as part of the 7SK RNP complex: the 7SK RNP complex sequesters the positive transcription elongation factor b (P-TEFb) in a large inactive 7SK RNP complex preventing RNA polymerase II phosphorylation and subsequent transcriptional elongation (PubMed: 17643375). The 7SK RNP complex also promotes snRNA gene transcription by RNA polymerase II via interaction with the little elongation

complex (LEC) (PubMed:[28254838](#)). In the 7SK RNP complex, MEPCE is required to stabilize 7SK RNA and facilitate the assembly of 7SK RNP complex (PubMed:[19906723](#), PubMed:[38100593](#)). MEPCE has a non- enzymatic function in the 7SK RNP complex; interaction with LARP7 within the 7SK RNP complex occluding its catalytic center (PubMed:[19906723](#)). Also required for stability of U6 snRNAs (PubMed:[38100593](#)).

Cellular Location

Nucleus.

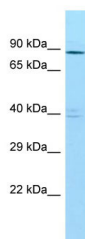
Tissue Location

Expressed in chronic myeloid leukemia cells, adrenal gland, brain, cerebellum, kidney, lung, mammary gland and testis (PubMed:12358911). Weakly or not expressed in other tissues (PubMed:12358911).

References

Ota T.,et al.Nat. Genet. 36:40-45(2004).
Hillier L.W.,et al.Nature 424:157-164(2003).
Scherer S.W.,et al.Science 300:767-772(2003).
Rogers S.A.,et al.Br. J. Haematol. 119:112-114(2002).
Rush J.,et al.Nat. Biotechnol. 23:94-101(2005).

Images



Host: Rabbit

Target Name: MEPCE

Sample Tissue: NCI-H226 Whole cell lysate

S

Antibody Dilution: 1.0µg/mlMEPCE is supported by
BioGPS gene expression data to be expressed in NCIH226

Please note: All products are 'FOR RESEARCH USE ONLY. NOT FOR USE IN DIAGNOSTIC OR THERAPEUTIC PROCEDURES'.