

# PATL2 Antibody - C-terminal region

Rabbit Polyclonal Antibody

Catalog # AI15450

## Product Information

---

<b>Application</b>	WB
<b>Primary Accession</b>	<a href="#">C9JE40</a>
<b>Other Accession</b>	<a href="#">NM_001145112</a> , <a href="#">NP_001138584</a>
<b>Reactivity</b>	Human, Mouse, Rat, Rabbit, Dog, Guinea Pig, Horse, Bovine
<b>Predicted</b>	Human, Mouse, Rat, Rabbit, Pig, Dog, Guinea Pig, Horse, Bovine
<b>Host</b>	Rabbit
<b>Clonality</b>	Polyclonal
<b>Calculated MW</b>	61464

## Additional Information

---

<b>Gene ID</b>	197135
<b>Other Names</b>	Protein PAT1 homolog 2, PAT1-like protein 2, Protein PAT1 homolog a, Pat1a, hPat1a, PATL2
<b>Format</b>	Liquid. Purified antibody supplied in 1x PBS buffer with 0.09% (w/v) sodium azide and 2% sucrose.
<b>Reconstitution &amp; Storage</b>	Add 50 ul of distilled water. Final anti-PATL2 antibody concentration is 1 mg/ml in PBS buffer with 2% sucrose. For longer periods of storage, store at 20°C. Avoid repeat freeze-thaw cycles.
<b>Precautions</b>	PATL2 Antibody - C-terminal region is for research use only and not for use in diagnostic or therapeutic procedures.

## Protein Information

---

<b>Name</b>	PATL2
<b>Function</b>	RNA-binding protein that acts as a translational repressor.
<b>Cellular Location</b>	Cytoplasm. Nucleus {ECO:0000250 UniProtKB:A2ARM1}
<b>Tissue Location</b>	Highly expressed in oocytes.

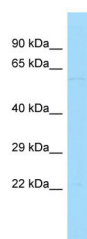
## References

---

Zody M.C.,et al.Nature 440:671-675(2006).

## Images

---



Host: Rabbit  
Target Name: PATL2  
Sample Tissue: Hela Whole cell lysate  
S  
Antibody Dilution: 1.0µg/ml

Please note: All products are 'FOR RESEARCH USE ONLY. NOT FOR USE IN DIAGNOSTIC OR THERAPEUTIC PROCEDURES'.