

# PSMB11 Antibody - C-terminal region

Rabbit Polyclonal Antibody

Catalog # AI15453

## Product Information

---

<b>Application</b>	WB
<b>Primary Accession</b>	<a href="#">A5LHX3</a>
<b>Other Accession</b>	<a href="#">NM_001099780</a> , <a href="#">NP_001093250</a>
<b>Reactivity</b>	Human, Rat
<b>Predicted</b>	Human, Rat
<b>Host</b>	Rabbit
<b>Clonality</b>	Polyclonal
<b>Calculated MW</b>	32530

## Additional Information

---

<b>Gene ID</b>	122706
<b>Alias Symbol</b>	BETA5T
<b>Other Names</b>	Proteasome subunit beta type-11, 3.4.25.1, Proteasome subunit beta-5t, PSMB11
<b>Format</b>	Liquid. Purified antibody supplied in 1x PBS buffer with 0.09% (w/v) sodium azide and 2% sucrose.
<b>Reconstitution &amp; Storage</b>	Add 50 ul of distilled water. Final anti-PSMB11 antibody concentration is 1 mg/ml in PBS buffer with 2% sucrose. For longer periods of storage, store at 20°C. Avoid repeat freeze-thaw cycles.
<b>Precautions</b>	PSMB11 Antibody - C-terminal region is for research use only and not for use in diagnostic or therapeutic procedures.

## Protein Information

---

<b>Name</b>	PSMB11
<b>Function</b>	The proteasome is a multicatalytic proteinase complex which is characterized by its ability to cleave peptides with Arg, Phe, Tyr, Leu, and Glu adjacent to the leaving group at neutral or slightly basic pH. The proteasome has an ATP-dependent proteolytic activity. Incorporated instead of PSMB5 or PSMB8, this unit reduces the chymotrypsin-like activity of the proteasome (By similarity). Plays a pivotal role in development of CD8-positive T cells (By similarity).
<b>Cellular Location</b>	Cytoplasm {ECO:0000255   PROSITE-ProRule:PRU00809}. Nucleus

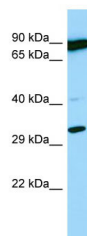
## References

---

Murata S.,et al.Science 316:1349-1353(2007).  
Heilig R.,et al.Nature 421:601-607(2003).

## Images

---



Host: Rabbit  
Target Name: PSMB11  
Sample Tissue: OVCAR-3 Whole cell lysate  
S  
Antibody Dilution: 1.0µg/ml

Please note: All products are 'FOR RESEARCH USE ONLY. NOT FOR USE IN DIAGNOSTIC OR THERAPEUTIC PROCEDURES'.