

RINL Antibody - N-terminal region

Rabbit Polyclonal Antibody

Catalog # AI15455

Product Information

Application	WB, IP
Primary Accession	Q6ZS11
Other Accession	NM_198445 , NP_940847
Reactivity	Human
Predicted	Human
Host	Rabbit
Clonality	Polyclonal
Calculated MW	62466

Additional Information

Gene ID	126432
Alias Symbol	FLJ44131, FLJ45909
Other Names	Ras and Rab interactor-like protein, RINL
Format	Liquid. Purified antibody supplied in 1x PBS buffer with 0.09% (w/v) sodium azide and 2% sucrose.
Reconstitution & Storage	Add 50 ul of distilled water. Final anti-RINL antibody concentration is 1 mg/ml in PBS buffer with 2% sucrose. For longer periods of storage, store at 20°C. Avoid repeat freeze-thaw cycles.
Precautions	RINL Antibody - N-terminal region is for research use only and not for use in diagnostic or therapeutic procedures.

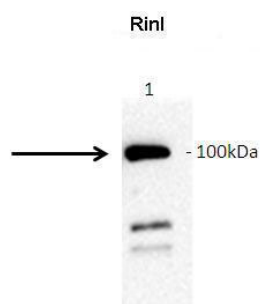
Protein Information

Name	RINL
Function	Guanine nucleotide exchange factor (GEF) for RAB5A and RAB22A that activates RAB5A and RAB22A by exchanging bound GDP for free GTP. Plays a role in endocytosis via its role in activating Rab family members (By similarity).
Cellular Location	Cell projection, ruffle. Cytoplasmic vesicle

References

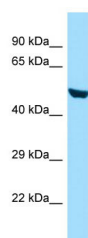
Ota T.,et al.Nat. Genet. 36:40-45(2004).
Grimwood J.,et al.Nature 428:529-535(2004).

Images

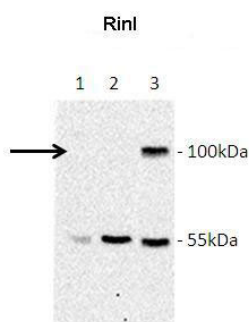


Amount and Sample Type : GFP-hRinl transfected COS7 cell lysate
Amount of IP Antibody : 10ug Primary Antibody : anti-GFP
Primary Antibody Dilution : 1:1000
Secondary Antibody : Goat anti-rabbit-HRP Secondary Antibody Dilution : 1:5000
Gene Name : RINL Submitted by : Barbara Woller; Medical University of Vienna

[See IP 1 Data and Customer Feedback for more Information](#)



WB Suggested Anti-RINL Antibody Titration: 1.0 µg/ml
Positive Control: HepG2 Whole Cell



Lanes: Lane 1: Jurkat lysate Lane 2: HeLa lysate Lane 3: GFP-Rinl transfected COS7 lysate
Primary Antibody Dilution: 1:1000
Secondary Antibody: Goat anti-rabbit-HRP
Secondary Antibody Dilution: 1:5000
Gene Name: RINL
Submitted by: Barbara Woller; Medical University of Vienna

[See Immunoblot 2 Data and Customer Feedback for more Information](#)

Please note: All products are 'FOR RESEARCH USE ONLY. NOT FOR USE IN DIAGNOSTIC OR THERAPEUTIC PROCEDURES'.