

# STK35 Antibody - C-terminal region

Rabbit Polyclonal Antibody

Catalog # AI15466

## Product Information

---

<b>Application</b>	WB
<b>Primary Accession</b>	<a href="#">Q8TDR2</a>
<b>Other Accession</b>	<a href="#">NM_080836</a> , <a href="#">NP_543026</a>
<b>Reactivity</b>	Human, Mouse, Rat, Rabbit, Pig, Dog, Guinea Pig, Horse, Bovine
<b>Predicted</b>	Human, Mouse, Rat, Rabbit, Pig, Dog, Guinea Pig, Horse, Bovine
<b>Host</b>	Rabbit
<b>Clonality</b>	Polyclonal
<b>Calculated MW</b>	58051

## Additional Information

---

<b>Gene ID</b>	140901
<b>Alias Symbol</b>	CLIK1, STK35L1
<b>Other Names</b>	Serine/threonine-protein kinase 35, 2.7.11.1, CLP-36-interacting kinase 1, CLIK-1, PDLIM1-interacting kinase 1, Serine/threonine-protein kinase 35 L1, STK35, CLIK1, PDIK1, STK35L1
<b>Format</b>	Liquid. Purified antibody supplied in 1x PBS buffer with 0.09% (w/v) sodium azide and 2% sucrose.
<b>Reconstitution &amp; Storage</b>	Add 50 ul of distilled water. Final anti-STK35 antibody concentration is 1 mg/ml in PBS buffer with 2% sucrose. For longer periods of storage, store at 20°C. Avoid repeat freeze-thaw cycles.
<b>Precautions</b>	STK35 Antibody - C-terminal region is for research use only and not for use in diagnostic or therapeutic procedures.

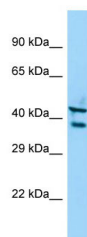
## Protein Information

---

<b>Name</b>	STK35
<b>Synonyms</b>	CLIK1, PDIK1, STK35L1
<b>Cellular Location</b>	Nucleus. Nucleus, nucleolus. Cytoplasm. Note=When associated with PDLIM1, it is mostly found in cytoplasm, localized to actin stress fibers (PubMed:11973348). However, PubMed:19756140 detected STK35 only in the nucleus, and the presence of PDLIM1 had no influence on its location.
<b>Tissue Location</b>	Expressed in testis.

## Images

---



Host: Rabbit  
Target Name: STK35  
Sample Tissue: A549 Whole cell lysate  
S  
Antibody Dilution: 1.0µg/ml

Please note: All products are 'FOR RESEARCH USE ONLY. NOT FOR USE IN DIAGNOSTIC OR THERAPEUTIC PROCEDURES'.