

ACTR6 Antibody - C-terminal region

Rabbit Polyclonal Antibody

Catalog # AI15470

Product Information

Application	WB
Primary Accession	Q9GZN1
Other Accession	NM_022496 , NP_071941
Reactivity	Human, Mouse, Rat, Rabbit, Pig, Dog, Guinea Pig, Horse, Bovine
Predicted	Human, Mouse, Rat, Rabbit, Pig, Dog, Guinea Pig, Horse, Bovine
Host	Rabbit
Clonality	Polyclonal
Calculated MW	45810

Additional Information

Gene ID	64431
Alias Symbol Other Names	ARP6, CDA12, FLJ13433, HSPC281, MSTP136, hARP6, hARPX Actin-related protein 6, hArp6, hARPX, ACTR6
Format	Liquid. Purified antibody supplied in 1x PBS buffer with 0.09% (w/v) sodium azide and 2% sucrose.
Reconstitution & Storage	Add 50 ul of distilled water. Final anti-ACTR6 antibody concentration is 1 mg/ml in PBS buffer with 2% sucrose. For longer periods of storage, store at 20°C. Avoid repeat freeze-thaw cycles.
Precautions	ACTR6 Antibody - C-terminal region is for research use only and not for use in diagnostic or therapeutic procedures.

Protein Information

Name	ACTR6
Function	Required for formation and/or maintenance of proper nucleolar structure and function (PubMed: 26164235). Plays a dual role in the regulation of ribosomal DNA (rDNA) transcription (By similarity). In the presence of high glucose, maintains active rDNA transcription through H2A.Z deposition and under glucose starvation, is required for the repression of rDNA transcription, and this function may be independent of H2A.Z (By similarity).
Cellular Location	Cytoplasm, cytoskeleton {ECO:0000250 UniProtKB:P45890}. Nucleus Nucleus, nucleolus. Note=Colocalizes with HP1 family proteins at pericentric heterochromatin

References

Kato M.,et al.Gene 268:133-140(2001).

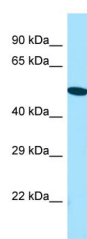
Li Y.,et al.Submitted (DEC-1999) to the EMBL/GenBank/DDBJ databases.

Ota T.,et al.Nat. Genet. 36:40-45(2004).

Suzuki Y.,et al.Submitted (APR-2005) to the EMBL/GenBank/DDBJ databases.

Mural R.J.,et al.Submitted (JUL-2005) to the EMBL/GenBank/DDBJ databases.

Images



WB Suggested Anti-ACTR6 Antibody Titration: 1.0 µg/ml
Positive Control: Jurkat Whole Cell

Please note: All products are 'FOR RESEARCH USE ONLY. NOT FOR USE IN DIAGNOSTIC OR THERAPEUTIC PROCEDURES'.