

# SLC35G3 Antibody - N-terminal region

Rabbit Polyclonal Antibody

Catalog # AI15471

## Product Information

---

<b>Application</b>	WB
<b>Primary Accession</b>	<a href="#">Q8N808</a>
<b>Other Accession</b>	<a href="#">NM_152462</a> , <a href="#">NP_689675</a>
<b>Reactivity</b>	Human
<b>Predicted</b>	Human
<b>Host</b>	Rabbit
<b>Clonality</b>	Polyclonal
<b>Calculated MW</b>	35381

## Additional Information

---

<b>Gene ID</b>	146861
<b>Alias Symbol</b>	FLJ40154, TMEM21A
<b>Other Names</b>	Solute carrier family 35 member G3, Acyl-malonyl-condensing enzyme 1, Transmembrane protein 21A, SLC35G3, AMAC1, TMEM21A
<b>Format</b>	Liquid. Purified antibody supplied in 1x PBS buffer with 0.09% (w/v) sodium azide and 2% sucrose.
<b>Reconstitution &amp; Storage</b>	Add 50 ul of distilled water. Final anti-SLC35G3 antibody concentration is 1 mg/ml in PBS buffer with 2% sucrose. For longer periods of storage, store at 20°C. Avoid repeat freeze-thaw cycles.
<b>Precautions</b>	SLC35G3 Antibody - N-terminal region is for research use only and not for use in diagnostic or therapeutic procedures.

## Protein Information

---

<b>Name</b>	SLC35G3
<b>Synonyms</b>	AMAC1, TMEM21A
<b>Cellular Location</b>	Membrane; Multi-pass membrane protein
<b>Tissue Location</b>	Expressed in testis..

## References

---

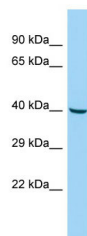
Ota T.,et al.Nat. Genet. 36:40-45(2004).

Mural R.J.,et al.Submitted (SEP-2005) to the EMBL/GenBank/DDBJ databases.

Xing J.,et al.Proc. Natl. Acad. Sci. U.S.A. 103:17608-17613(2006).

## Images

---



Host: Rabbit

Target Name: SLC35G3

Sample Tissue: Fetal Liver lysates

Antibody Dilution: 1.0µg/ml

Please note: All products are 'FOR RESEARCH USE ONLY. NOT FOR USE IN DIAGNOSTIC OR THERAPEUTIC PROCEDURES'.