

Ccdc59 Antibody - C-terminal region

Rabbit Polyclonal Antibody

Catalog # AI15480

Product Information

Application	WB
Primary Accession	Q8R2N0
Other Accession	NM_025602 , NP_079878
Reactivity	Human, Mouse, Rat, Rabbit, Pig, Dog, Guinea Pig, Horse, Bovine, Yeast
Predicted	Human, Mouse, Rat, Rabbit, Pig, Dog, Guinea Pig, Horse, Bovine, Yeast
Host	Rabbit
Clonality	Polyclonal
Calculated MW	28034

Additional Information

Gene ID	52713
Alias Symbol	2300004H16Rik, D10Ertd718e
Other Names	Thyroid transcription factor 1-associated protein 26, TTF-1-associated protein 26, Coiled-coil domain-containing protein 59, Ccdc59, D10Ertd718e, Tap26
Format	Liquid. Purified antibody supplied in 1x PBS buffer with 0.09% (w/v) sodium azide and 2% sucrose.
Reconstitution & Storage	Add 50 ul of distilled water. Final anti-Ccdc59 antibody concentration is 1 mg/ml in PBS buffer with 2% sucrose. For longer periods of storage, store at 20°C. Avoid repeat freeze-thaw cycles.
Precautions	Ccdc59 Antibody - C-terminal region is for research use only and not for use in diagnostic or therapeutic procedures.

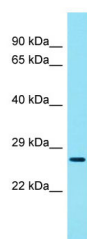
Protein Information

Name	Ccdc59
Synonyms	D10Ertd718e, Tap26
Function	Component of the transcription complexes of the pulmonary surfactant-associated protein-B (SFTPb) and -C (SFTPc). Enhances homeobox protein Nkx-2.1-activated SFTPb and SFTPc promoter activities (By similarity).
Cellular Location	Nucleus.

References

Carninci P., et al. Science 309:1559-1563(2005).

Images



Host: Rabbit
Target Name: Ccdc59
Sample Tissue: Mouse Thymus lysates
Antibody Dilution: 1.0µg/ml

Please note: All products are 'FOR RESEARCH USE ONLY. NOT FOR USE IN DIAGNOSTIC OR THERAPEUTIC PROCEDURES'.