

CKMT1B Antibody - N-terminal region

Rabbit Polyclonal Antibody

Catalog # AI15483

Product Information

Application	WB
Primary Accession	P12532
Other Accession	XP_005254554
Reactivity	Human, Mouse, Rat, Rabbit, Zebrafish, Pig, Dog, Guinea Pig, Horse, Bovine
Predicted	Human, Mouse, Rat, Rabbit, Zebrafish, Pig, Dog, Guinea Pig, Horse, Bovine
Host	Rabbit
Clonality	Polyclonal
Calculated MW	47037

Additional Information

Gene ID	1159;548596
Other Names	Creatine kinase U-type, mitochondrial, 2.7.3.2, Acidic-type mitochondrial creatine kinase, Mia-CK, Ubiquitous mitochondrial creatine kinase, U-MtCK, CKMT1A, CKMT
Format	Liquid. Purified antibody supplied in 1x PBS buffer with 0.09% (w/v) sodium azide and 2% sucrose.
Reconstitution & Storage	Add 50 μ l of distilled water. Final Anti-CKMT1B antibody concentration is 1 mg/ml in PBS buffer with 2% sucrose. For longer periods of storage, store at -20°C. Avoid repeat freeze-thaw cycles.
Precautions	CKMT1B Antibody - N-terminal region is for research use only and not for use in diagnostic or therapeutic procedures.

Protein Information

Name	CKMT1A
Synonyms	CKMT
Function	Reversibly catalyzes the transfer of phosphate between ATP and various phosphogens (e.g. creatine phosphate). Creatine kinase isoenzymes play a central role in energy transduction in tissues with large, fluctuating energy demands, such as skeletal muscle, heart, brain and spermatozoa.
Cellular Location	Mitochondrion inner membrane; Peripheral membrane protein; Intermembrane side

References

Haas R.C.,et al.J. Biol. Chem. 264:2890-2897(1989).

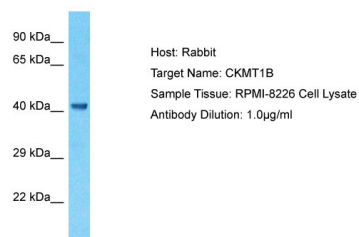
Kalnina N.,et al.Submitted (MAY-2003) to the EMBL/GenBank/DDBJ databases.

Ota T.,et al.Nat. Genet. 36:40-45(2004).

Totoki Y.,et al.Submitted (APR-2005) to the EMBL/GenBank/DDBJ databases.

Burkard T.R.,et al.BMC Syst. Biol. 5:17-17(2011).

Images



Host: Rabbit
Target Name: CKMT1B
Sample Tissue: RPMI-8226 Whole cell lysate
S
Antibody Dilution: 1.0µg/ml

Please note: All products are 'FOR RESEARCH USE ONLY. NOT FOR USE IN DIAGNOSTIC OR THERAPEUTIC PROCEDURES'.