

Cyp4f17 Antibody - middle region

Rabbit Polyclonal Antibody

Catalog # AI15486

Product Information

Application	WB
Primary Accession	Q9EP75
Other Accession	NM_001101445 , NP_001094915
Reactivity	Human, Mouse, Rat, Rabbit, Dog, Guinea Pig, Horse, Bovine, Sheep
Predicted	Human, Mouse, Rat, Rabbit, Pig, Dog, Guinea Pig, Horse, Bovine, Sheep
Host	Rabbit
Clonality	Polyclonal
Calculated MW	59800

Additional Information

Gene ID	64385
Alias Symbol	EG208285
Other Names	Leukotriene-B4 omega-hydroxylase 3, 1.14.13.30, Cyp4f-14, Cytochrome P450 4F14, Cytochrome P450-LTB-omega, Leukotriene-B4 20-monooxygenase 3, Cyp4f14
Format	Liquid. Purified antibody supplied in 1x PBS buffer with 0.09% (w/v) sodium azide and 2% sucrose.
Reconstitution & Storage	Add 50 ul of distilled water. Final anti-Cyp4f17 antibody concentration is 1 mg/ml in PBS buffer with 2% sucrose. For longer periods of storage, store at 20°C. Avoid repeat freeze-thaw cycles.
Precautions	Cyp4f17 Antibody - middle region is for research use only and not for use in diagnostic or therapeutic procedures.

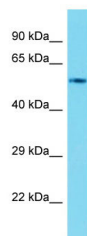
Protein Information

Name	Cyp4f14
Function	Cytochromes P450 are a group of heme-thiolate monooxygenases. Catalyzes the omega-hydroxylation of LTB4 (By similarity).
Cellular Location	Endoplasmic reticulum membrane; Peripheral membrane protein. Microsome membrane; Peripheral membrane protein

References

Kikuta Y.,et al.Submitted (JAN-2000) to the EMBL/GenBank/DDBJ databases.
Antonovic L.,et al.Submitted (FEB-2000) to the EMBL/GenBank/DDBJ databases.
Carninci P.,et al.Science 309:1559-1563(2005).

Images



Host: Rabbit
Target Name: Cyp4f17
Sample Tissue: Mouse Kidney lysates
Antibody Dilution: 1.0µg/ml

Please note: All products are 'FOR RESEARCH USE ONLY. NOT FOR USE IN DIAGNOSTIC OR THERAPEUTIC PROCEDURES'.